

GALATHEA REPORT

Volume 1

Published by means of a grant from
STATENS ALMINDELIGE VIDENSKABSFOND
(The Danish State Research Foundation)

Printed by Nordlundes Bogtrykkeri
Copenhagen

Price: 90 Danish Kroner

GALATHEA REPORT

Volume 1

*Scientific Results
of The Danish Deep-Sea Expedition
Round the World 1950-52*



ISSUED BY THE GALATHEA COMMITTEE

PRESIDENT: H. R. H. PRINCE AXEL OF DENMARK

EXECUTIVE EDITORS:

Anton F. Bruun, D. Sc., LL. D.

Leader of the Expedition

Sy. Greve, Captain, R. D. N.

Commander of the Galathea

R. Spärck, D. Sc.

Professor of Zoology, Vice-President of the Committee

COPENHAGEN

1957-1959

CONTENTS

	Page
BRUUN, ANTON F.: General Introduction to the Reports and List of Deep-Sea Stations	7
NIELSEN, E. STEEMANN & E. AABYE JENSEN: Primary Oceanic Production. The Autotrophic Production of Organic Matter in the Oceans	49
BRAARUD, TRYGVE: A Red Water Organism from Walvis Bay	137
ZOBELL, CLAUDE E. & RICHARD Y. MORITA: Deep-Sea Bacteria	139
KILLERICH, A.: Bathymetric Features of the Philippine Trench	155
KRAMP, P. L.: <i>Stephanoscyphus</i> (Scyphozoa)	173
MILLAR, R. H.: Ascidiacea	189
DAHL, ERIK: Amphipoda from Depths Exceeding 6000 Meters	211
PICKFORD, GRACE E.: Vampyromorpha	243
ROFEN, ROBERT R.: The Whale-Fishes: Families Cetomimidae, Barbourisiidae and Rondeletiidae (Order Cetunculi)	255

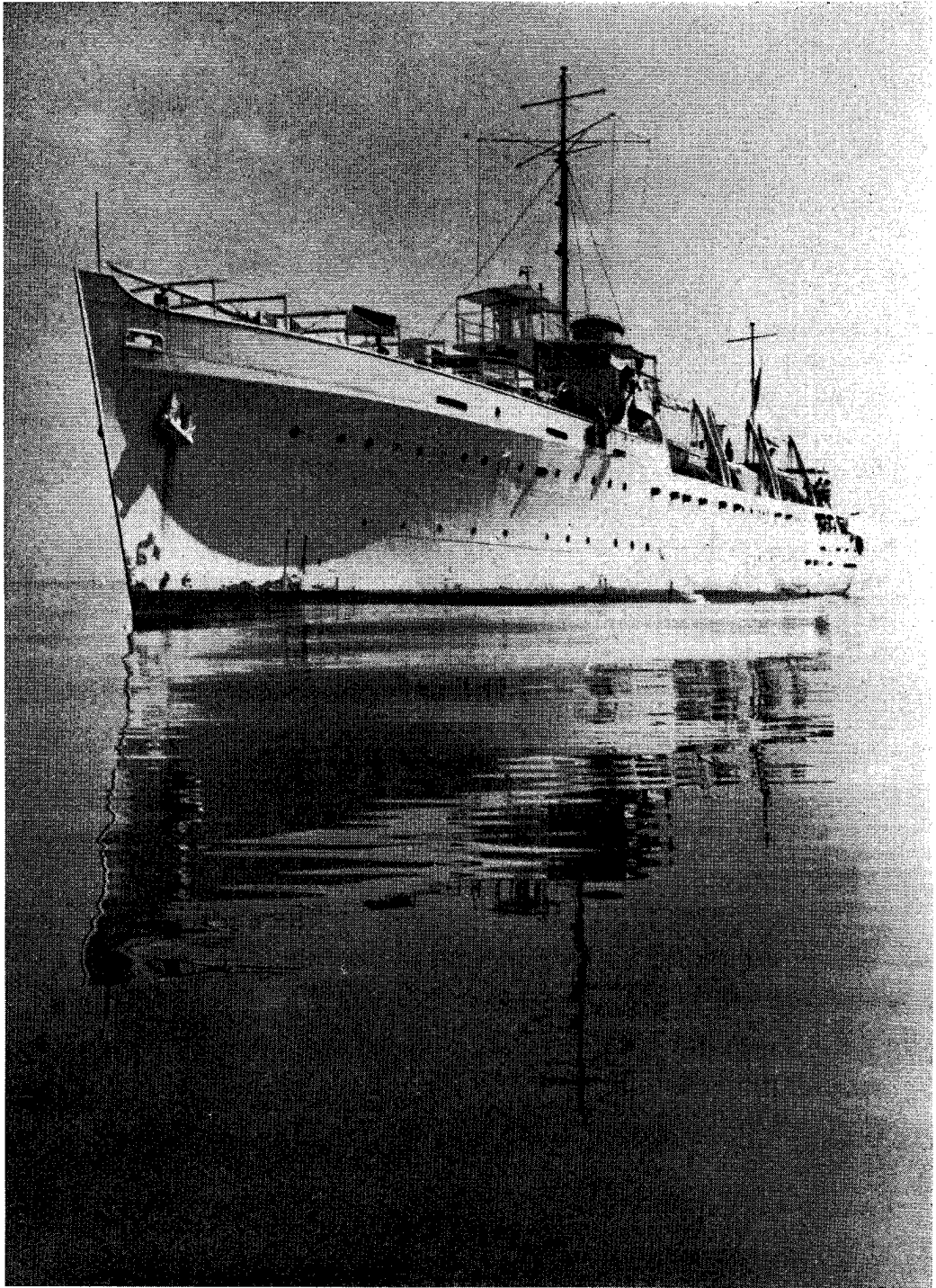


Fig. 1. The Galathea in the Indian Ocean.