

PLATE XIV

- Fig. 1. Lectotype of *Ipnops murrayi* Günther, 1878. Std. I. 131 mm. (From GÜNTHER 1887).
- Fig. 2. Lectotype of *Ipnops agassizi* Garman, 1899. Std. I. 134 mm. (From GARMAN 1899).
- Fig. 3. Ventral part of the head of *Ipnops meadi* n.sp. "Galathea" St. 282. Std. I. 121 mm.
- Fig. 4. Ventral part of the head of *Ipnops agassizi* Garman, 1899. "Galathea" St. 299. Std. I. 112 mm.
- Fig. 5. Transverse section of a gonad from *Ipnops meadi* n.sp. "Galathea" St. 282. Std. I. 93 mm. o = ovarian part; t = testicular part. 100×.

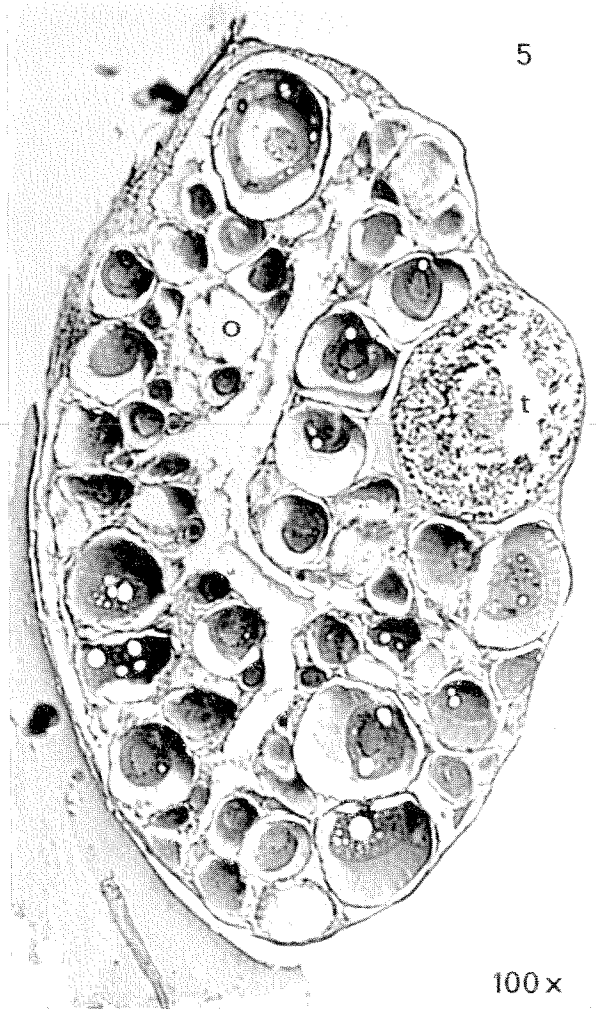
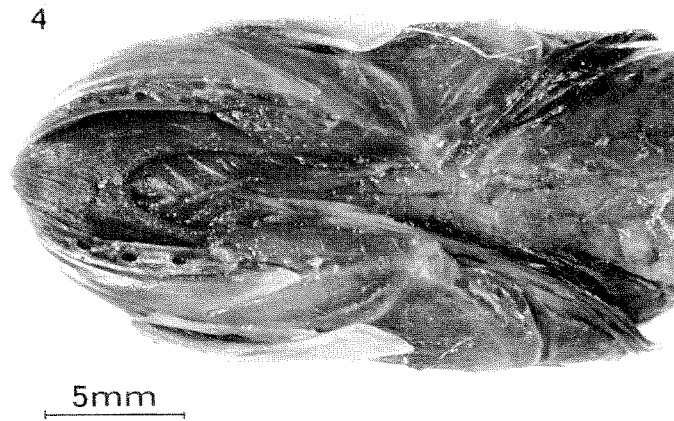
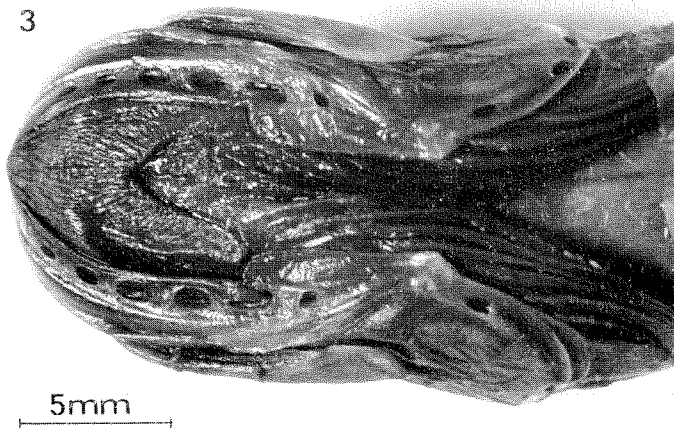
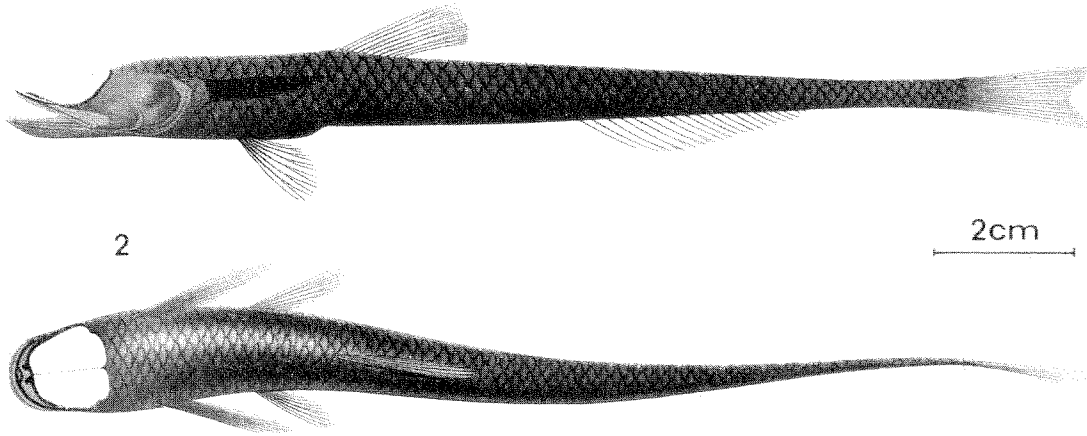
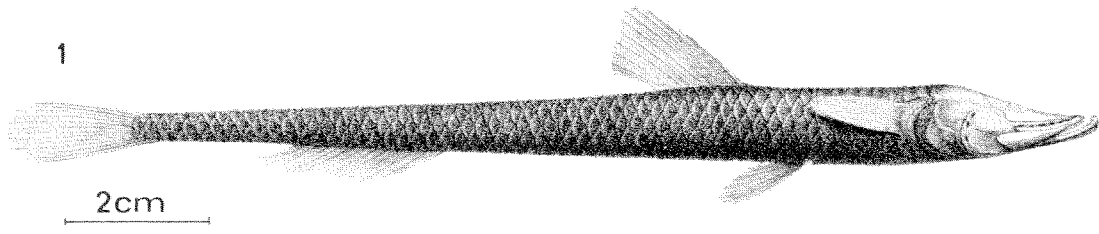


PLATE XV

- Fig. 1. Serrated pectoral fin ray of the lectotype of *Ipnops murrayi* Günther, 1878.
- Fig. 2. Anterior gill arch from the holotype of *Ipnops meadi* n.sp. 4×.
- Fig. 3. Anterior gill arch from the holotype of *Bathymicrops brevianalis* n.sp. 5×.
- Fig. 4. Transverse section of a gonad from the holotype of *Bathymicrops brevianalis* n.sp. o = ovarian part; t = testicular part. 50×.
- Fig. 5. Gonads, showing the light, testicular string, from a) Holotype of *Bathymicrops brevianalis* n.sp. and b) *Bathymicrops regis* Hjort and Koefoed, 1912. "Galathea" St. 194.
- Fig. 6. *Bathymicrops regis* Hjort and Koefoed, 1912. "Galathea" St. 194. Std. 1. 117 mm. (Short intestine; well-developed gonads).
- Fig. 7. Holotype of *Bathymicrops brevianalis* n.sp. Std. 1. 111 mm. (Long intestine; no gonads visible; genital papilla).

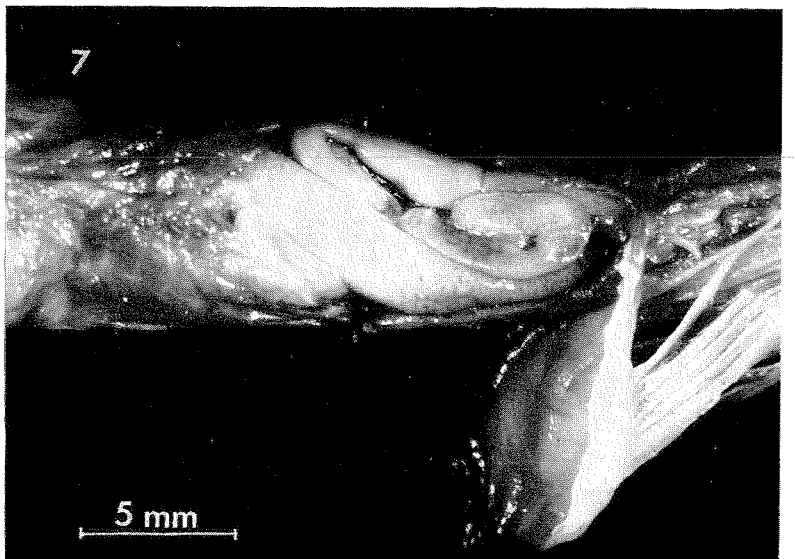
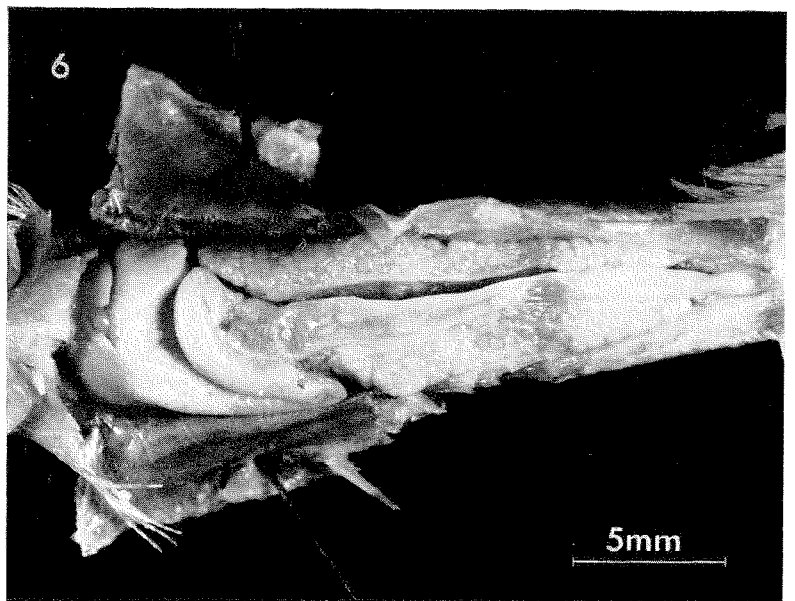
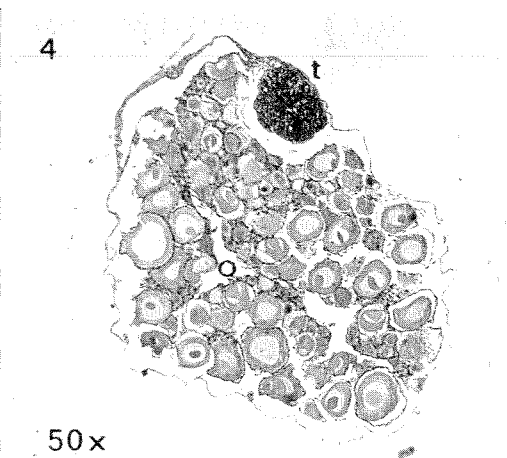
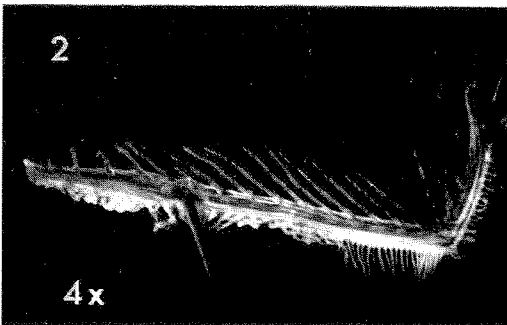
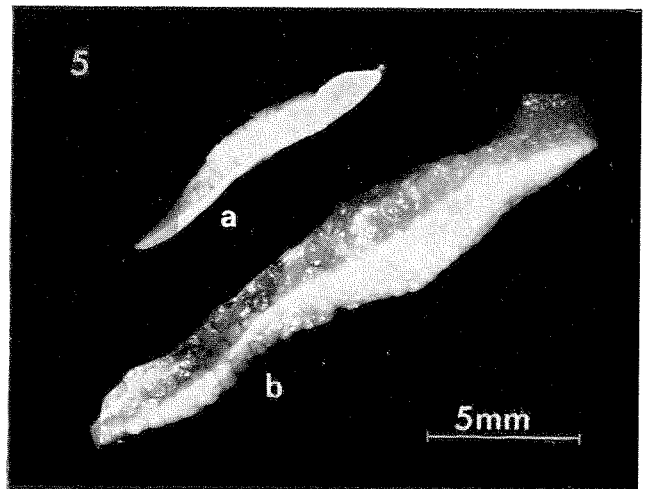
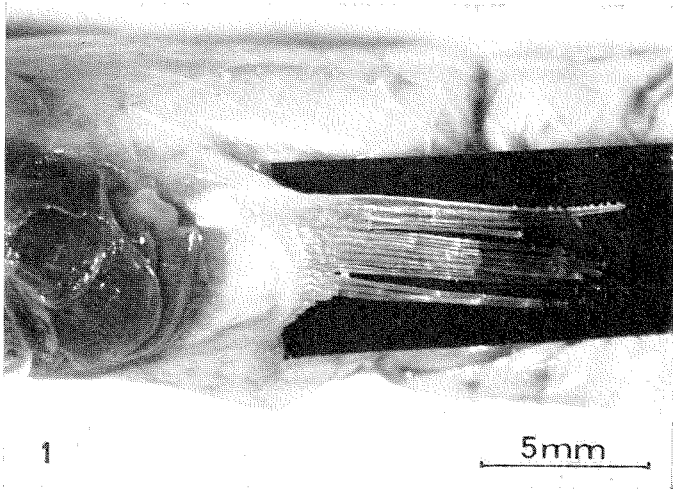


PLATE XVI

- Fig. 1. Holotype of *Bathymicrops regis* Hjort and Koefoed, 1912. Std. 1. 91 mm. (From KOEFOED 1927).
- Fig. 2. Holotype of *Bathytyphlops sewelli* (Norman, 1939). Std. 1. 200 mm. (From NORMAN 1939).
- Fig. 3. *Bathytyphlops sewelli* (Norman, 1939). "Galathea" St. 238. Std. 1. 93 mm.
- Fig. 4. Anterior gill arch of *Bathytyphlops sewelli* (Norman, 1939). "Galathea" St. 238. 5×.
- Fig. 5. Anterior gill arch of the paratype of *Bathytyphlops marionae* Mead, 1958.
- Fig. 6. Radiograph of the posterior part of *Bathytyphlops sewelli* (Norman, 1939). "Galathea" St. 238. Std. 1. 93 mm. Exposures: 15 KV 150 m. amp. sec. (Gevaert D 7 Structurix). 1×.
- Fig. 7. Radiograph of the posterior part of the paratype of *Bathytyphlops marionae* Mead, 1958. Std. 1. 260 mm. Exposures: 20 KV 250 m. amp. sec. (Gevaert D 7 Structurix). 1×.
-

