

PLATE 13

*Ammoclathrina sagenella* (Haeckel).

A. Specimen from "Challenger" St. 256.  $\times$  6.

*Ammolyntus haliphysema* Haeckel.

B. Specimen from "Challenger" St. 270.  $\times$  5.

*Ammolyntus prototypus* Haeckel.

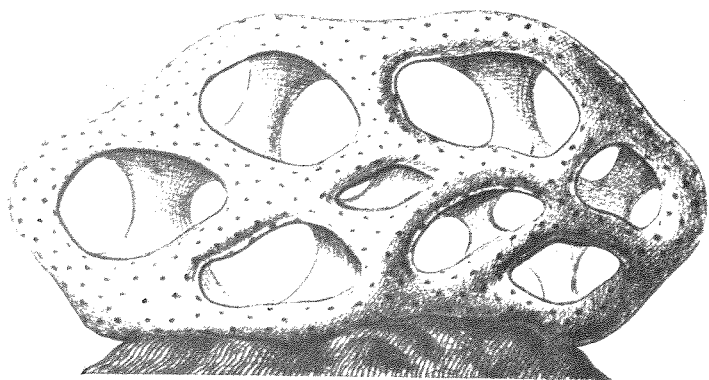
C. Specimen from "Challenger" St. 271.  $\times$  20.

*Ammosolenia rhizammina* Haeckel.

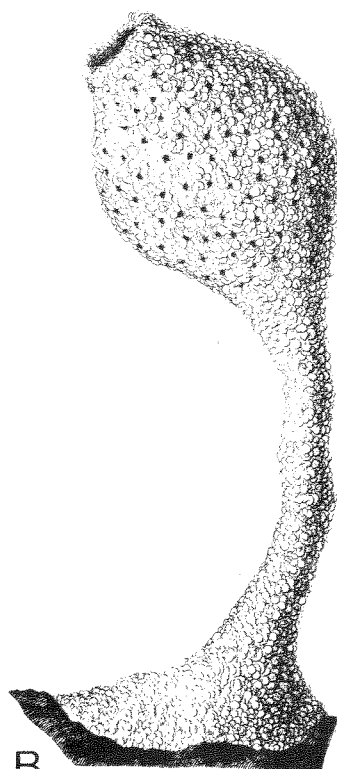
D. Specimen(s) from "Challenger" St. 216A.  $\times$  9.

*Cerelpsamma argillaceum* (Haeckel).

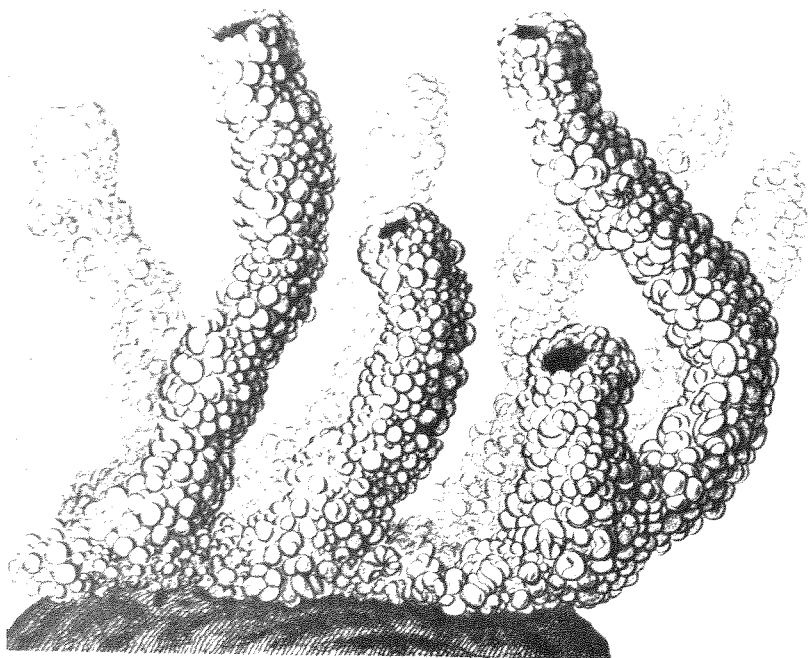
E. Specimen(s) from "Challenger" St. 294.  $\times$  4.



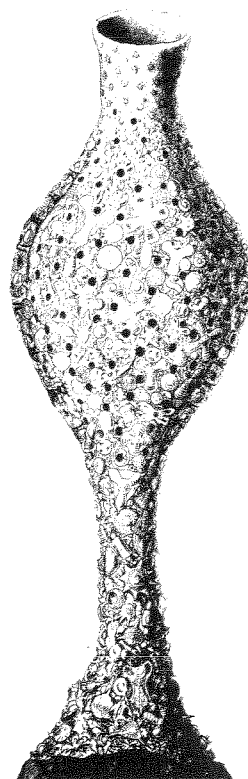
A



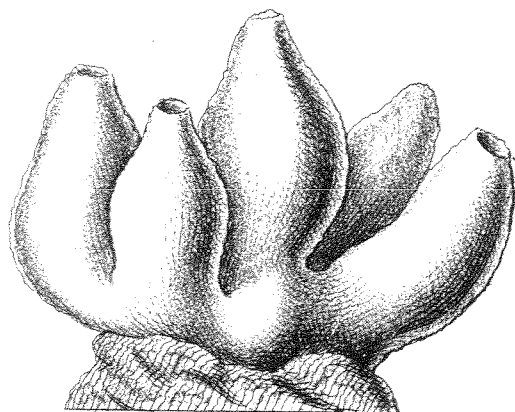
B



D



C



E

PLATE 14

*Psammia nummulina* Haeckel.

A. Survey of cross-section. "Vema" St. 15-49. 10  $\mu$ . Haematoxylin-eosin.

*Stannoma dendroides* Haeckel.

B. Survey of cross-section. "Galathea" St. 235. 10  $\mu$ . Haematoxylin-eosin.

C. Cross-section of granellare branch with numerous type 1 nuclei in the plasma.  
"Galathea" St. 235. 10  $\mu$ . Haematoxylin-eosin.

D. Plasma part with three type 1 nuclei and one type 2 nucleus. "Galathea" St. 235.  
10  $\mu$ . Haematoxylin-eosin.

LETTERING

g: granellare

l: linellae

n<sup>1</sup>: nucleus of type 1

n<sup>2</sup>: nucleus of type 2

s: stercomare

x: xenophyae fragments

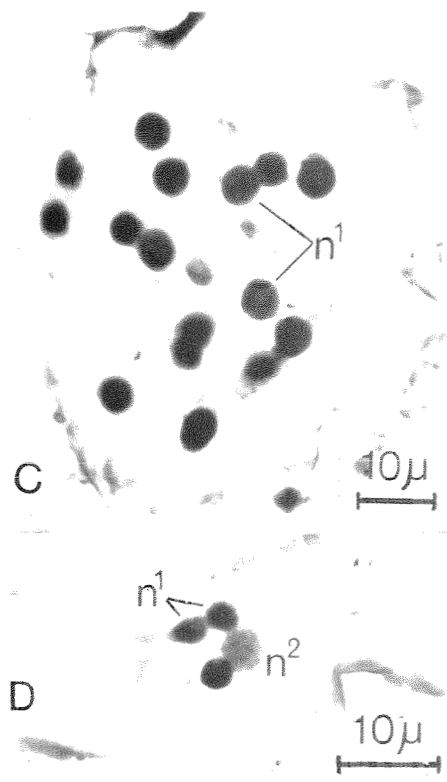
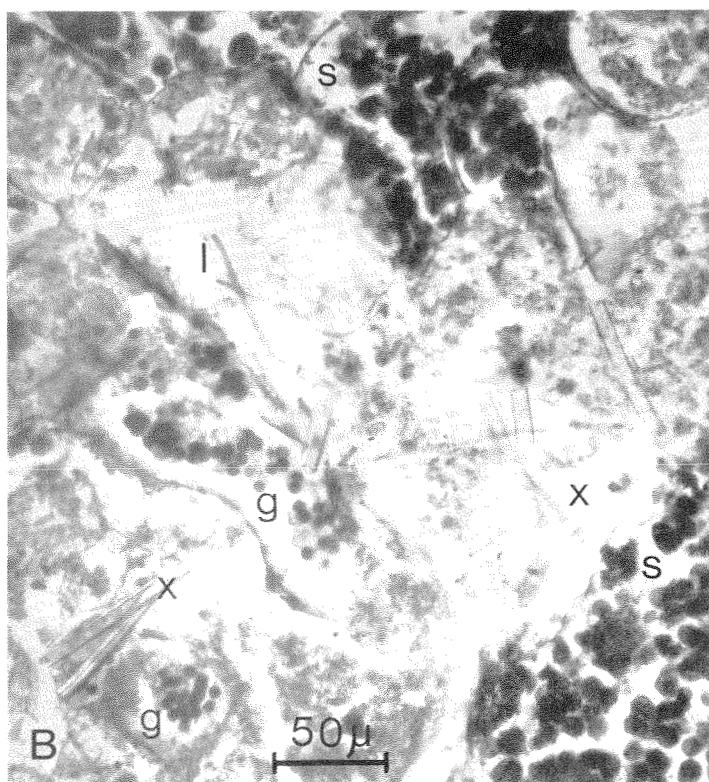
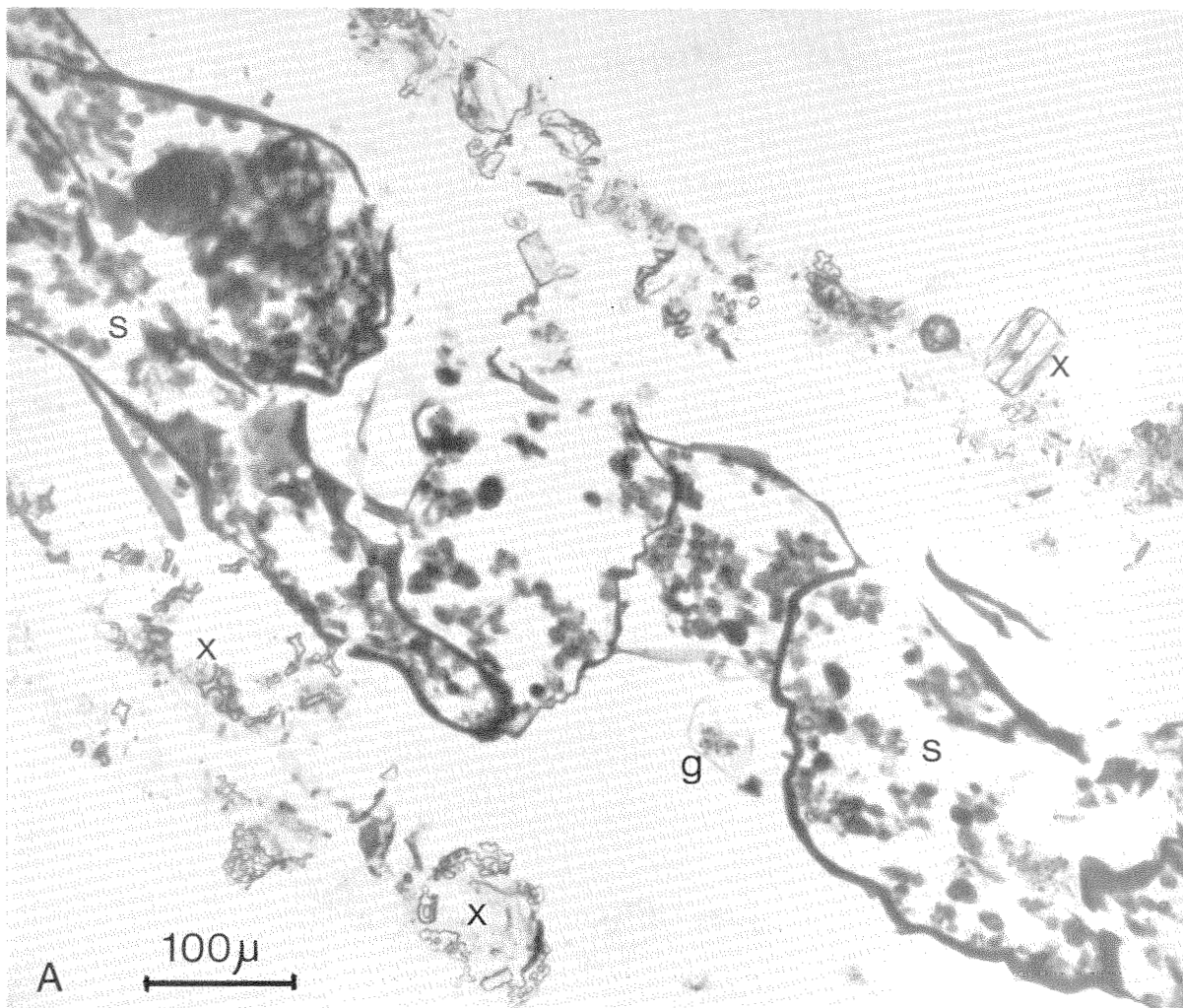


PLATE 15

*Stannophyllum globigerinum* Haeckel.

- A. Survey of cross-section. "Galathea" St. 235. 10  $\mu$ . Haematoxylin-eosin.
- B. Granellare part with lumps of type 3 nuclei. "Galathea" St. 235. 10  $\mu$ .  
Haematoxylin-eosin.
- C. Granellare part with type 1 and type 3 nuclei. "Galathea" St. 235. 10  $\mu$ .  
Haematoxylin-eosin.

*Stannophyllum zonarium* Haeckel.

- D. Survey of cross-section. "Galathea" St. 716. 10  $\mu$ . Haematoxylin-eosin.

LETTERING

- g: granellare
- l: linellae
- ln<sup>3</sup>: lump of type 3 nuclei
- n<sup>1</sup>: type 1 nucleus
- s: stercomare
- x: xenophyae fragments

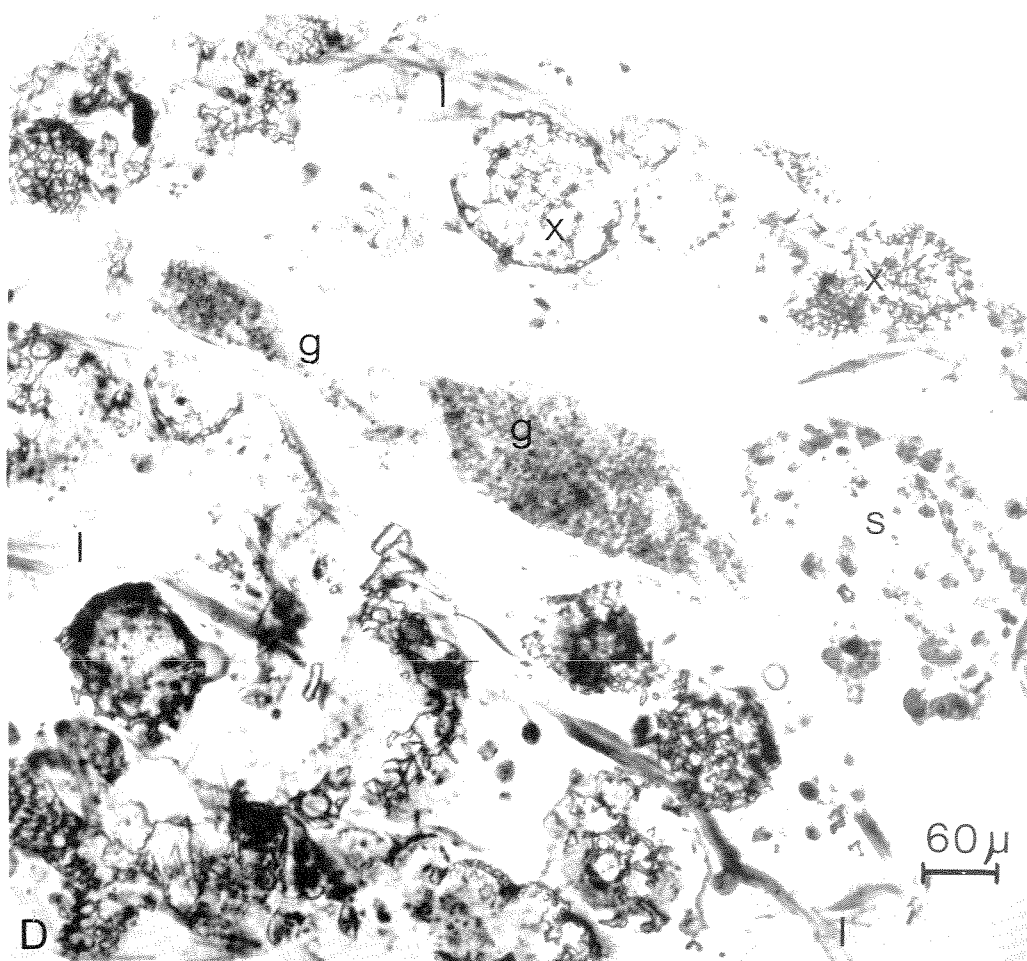
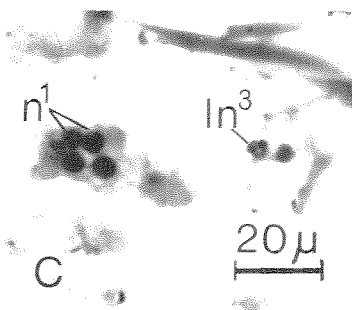
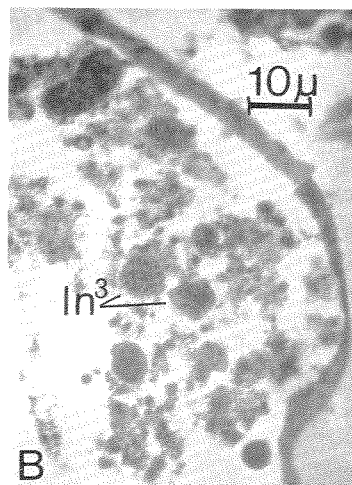
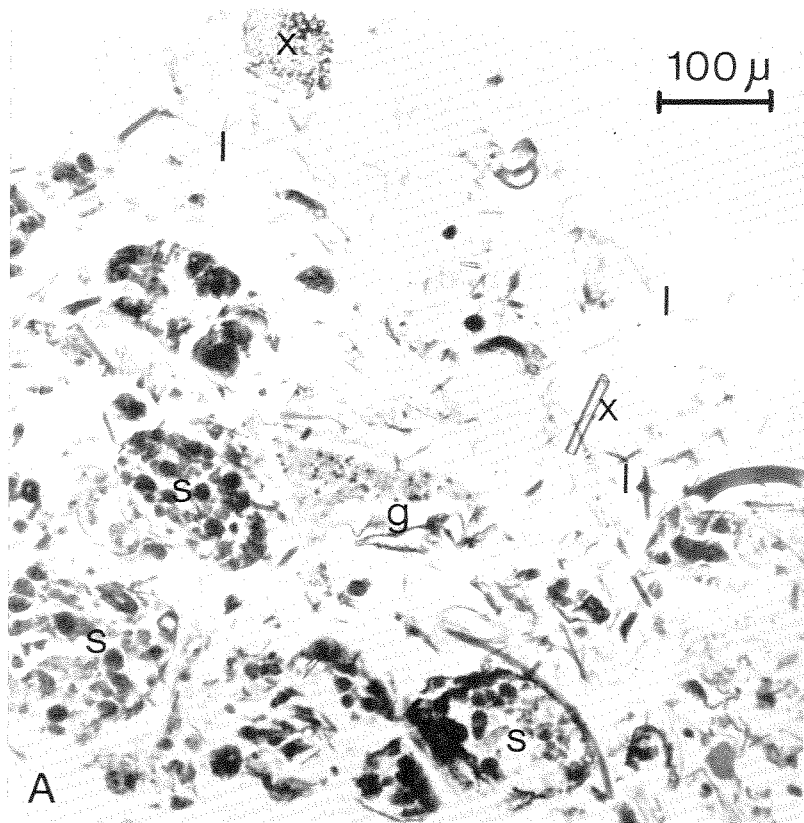


PLATE 16

*Psammetta erythrocytomorpha* Schulze.

- A. Plasma with granellae and unidentified small inclusions. "Valdivia" St. 250. 5  $\mu$ . Azan.

*Stannophyllum mollum* n.sp.

- B. Plasma with nuclei and granellae. "Galathea" St. 231. 10  $\mu$ . Haematoxylin-eosin.

*Stannophyllum zonarium* Haeckel.

- C. Granellae. "Galathea" St. 716.  $\times$  7800.

*Psammetta*-like specimens.

- D. Supposed xenophyophores with extended pseudopodia. PROA Project 1962 St. 6, 7665-7710 m (New Britain Trench). The specimens are presumably between 3 and 6 cm in diameter.

*Psammmina globigerina* Haeckel.

- E. Stercomes of two types, and a xanthosome. "Siboga" St. 211. 5  $\mu$ . Haematoxylin-eosin.

*Syringammmina tasmanensis* Lewis.

- F. Cross-section of a single tube. Several stercomare strings and one granellare string are seen. 8  $\mu$ . Toluidine blue. After LEWIS 1966.

LETTERING

- G: granellare  
gr: granellae  
in: inclusions  
n: nucleus  
s: stercomare  
St<sup>1</sup>: stercome of type 1  
St<sup>2</sup>: stercome of type 2  
xa: xanthosome

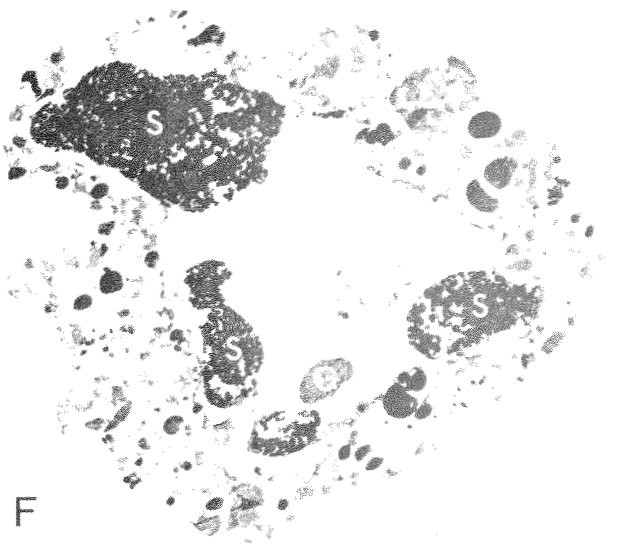
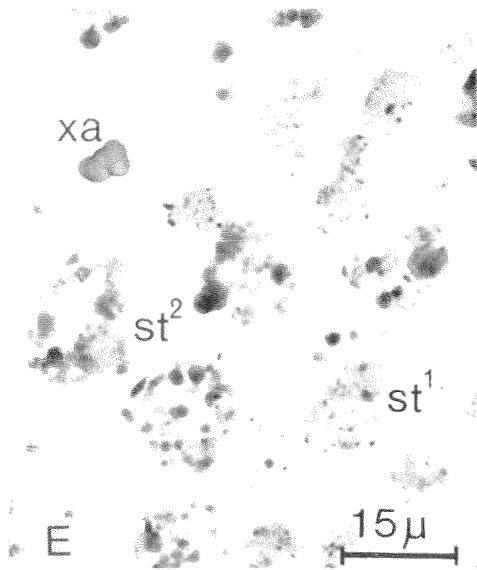
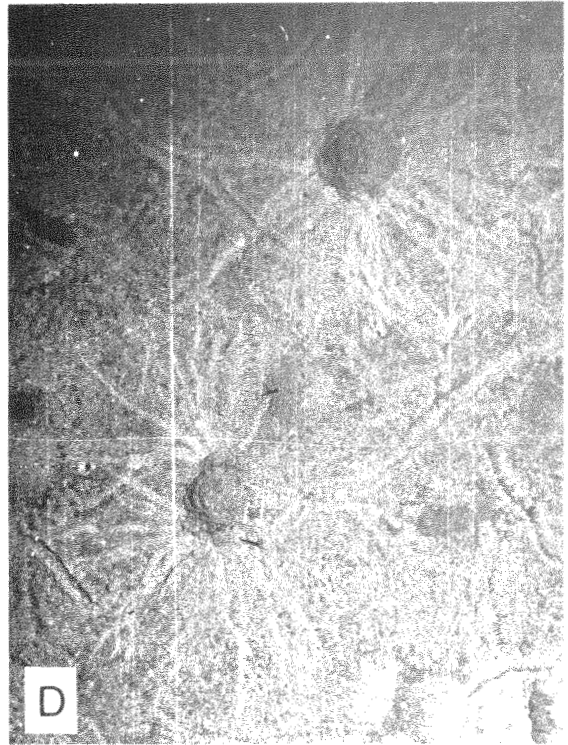
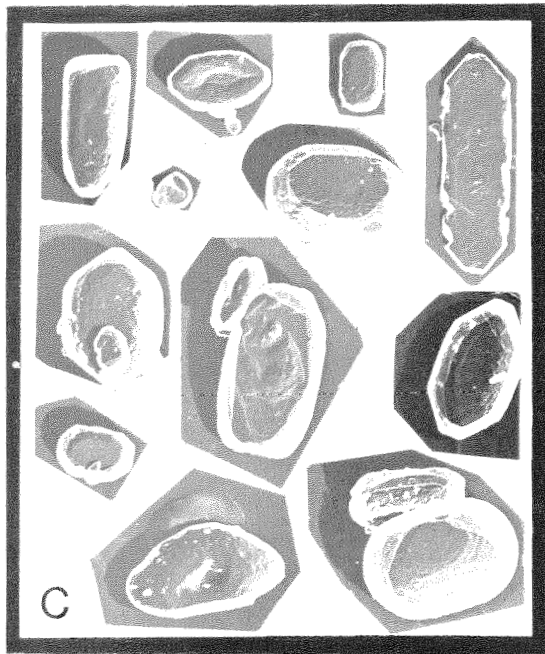
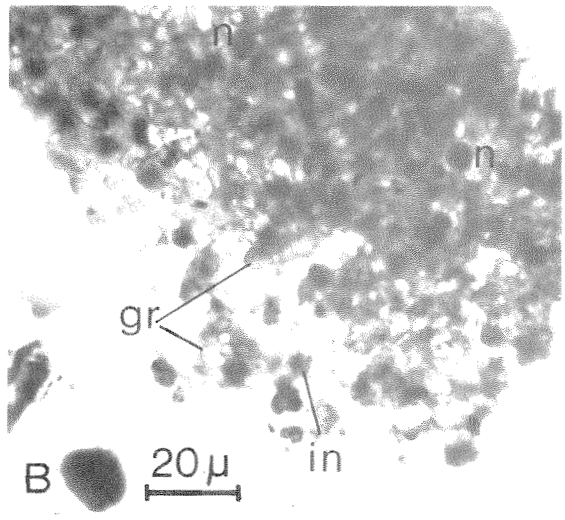
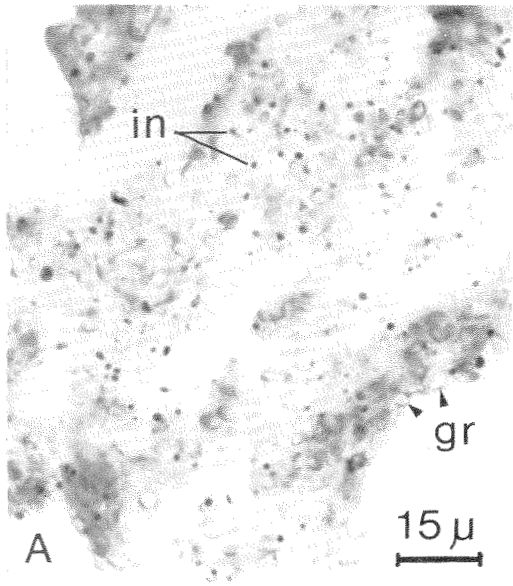




PLATE 17

*Cerelasma massa* n. sp.

- A. Survey of cross-section. "Galathea" St. 234. 10  $\mu$ . Haematoxylin-eosin.
- D. Stercomes.  $\times$  4700.
- E. Formation of stercomes. Three stercomes composed solely of granellae are seen. "Galathea" St. 234. 10  $\mu$ . Haematoxylin-eosin.

*Psammetta erythrocytomorpha* Schulze.

- B. Stercome containing folded membranes. "Valdivia" St. 250; 5  $\mu$ . Azan. Same magnification as in C.
- C. Xanthosomes. "Valdivia" St. 250. 5  $\mu$ . Azan.

*Stannophyllum zonarium* Haeckel.

- F. Longitudinal section of linella.  $\times$  28000.
- G. Cross-section of linella.  $\times$  28000.

LETTERING

- g: granellare
- s: stercomare
- xa: xanthosome

