

PLATE XI

- Fig. 1. *Acanthonus armatus* photographed immediately after capture. "Galathea" St. 52, std. l. 220 mm.
- Fig. 2. Radiograph of *A. armatus*. "Galathea" St. 52, std. l. 220 mm. Exposures: Anterior part 25 KV 100 m.amp.sec., posterior part 15 KV 200 m.amp.sec. (Gevaert D 7 Structurix).
- Fig. 3. *A. armatus* from "Oregon" St. 2567, std. l. 93 mm.
- Fig. 4. Holotype of *A. spinifer*. "Albatross" St. 3381, std. l. 71 mm.
- Fig. 5. Bundles of dorsal filit from the polychaete *Aphrodite* and headbones of *Acanthonus* sp. from the stomach of *A. armatus*. "Oregon" St. 2567, std. l. 242 mm.
- Fig. 6. Gill raker from the anterior arch of *A. armatus*. "Galathea" St. 52, std. l. 220 mm.

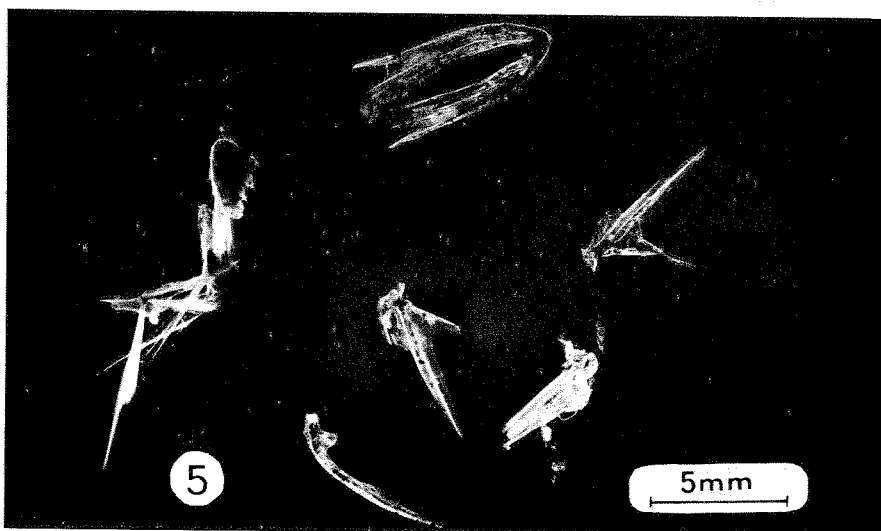
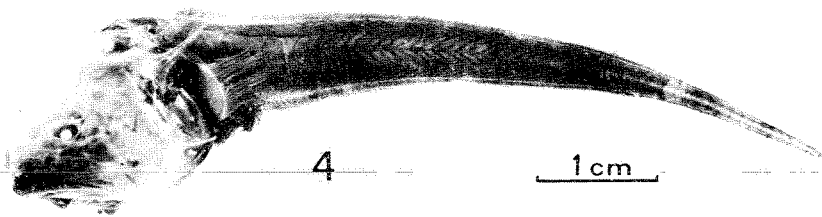
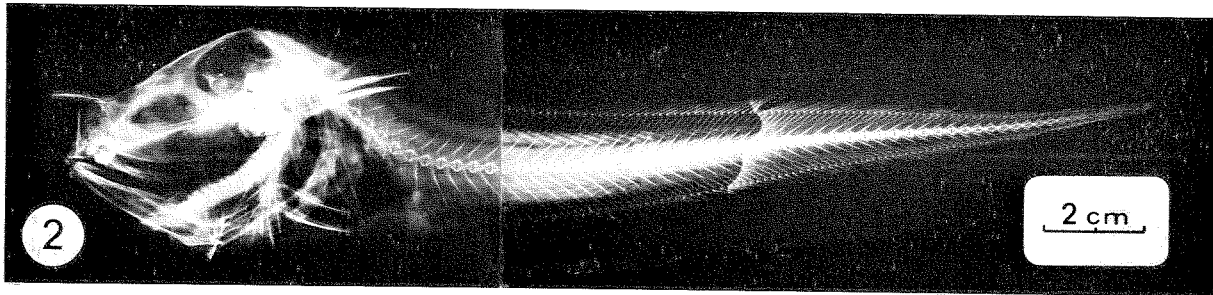
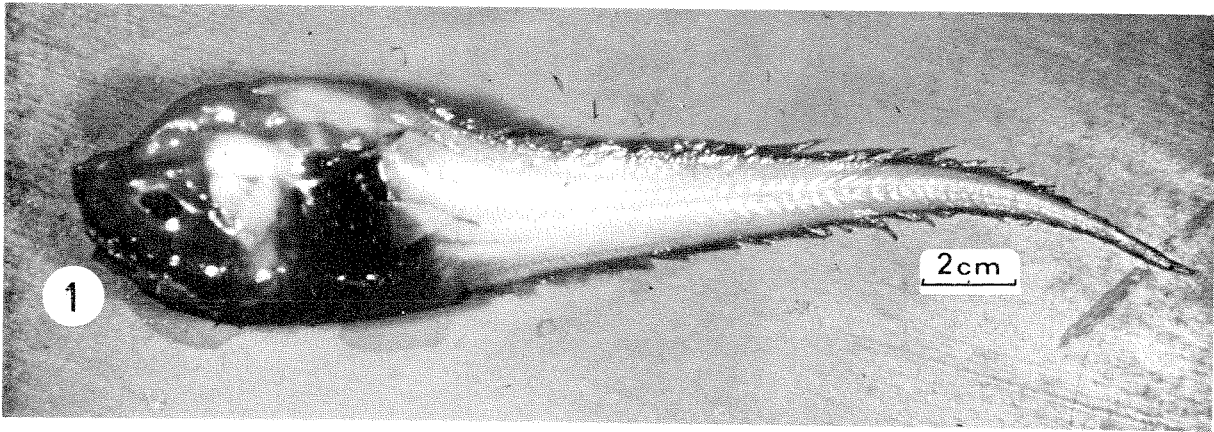


PLATE XII

- Fig. 1. *Typhlonus nasus* photographed immediately after capture. "Galathea" St. 450, std. l. 285 mm. P 77448.
- Fig. 2. Latero-ventral view of P 77448 (cf. Fig. 1).
- Fig. 3. Radiograph of *T. nasus*. "Galathea", St. 450, std. l. 250 mm. P 77447. Exposures: Anterior part 25 KV 350 m. amp. sec., middle part 20 KV 150 m. amp. sec., and posterior part 15 KV 300 m. amp. sec. (Gevaert D 7 Structurix).
- Fig. 4. Section through the thymus of *T. nasus*. "Galathea" St. 450, std. l. 211 mm. P 77446. The scale indicates  $\frac{1}{10}$  mm.
- Fig. 5. Anterior part of a small specimen of *T. nasus*. "Galathea" St. 450, std. l. 73 mm. P 77444.

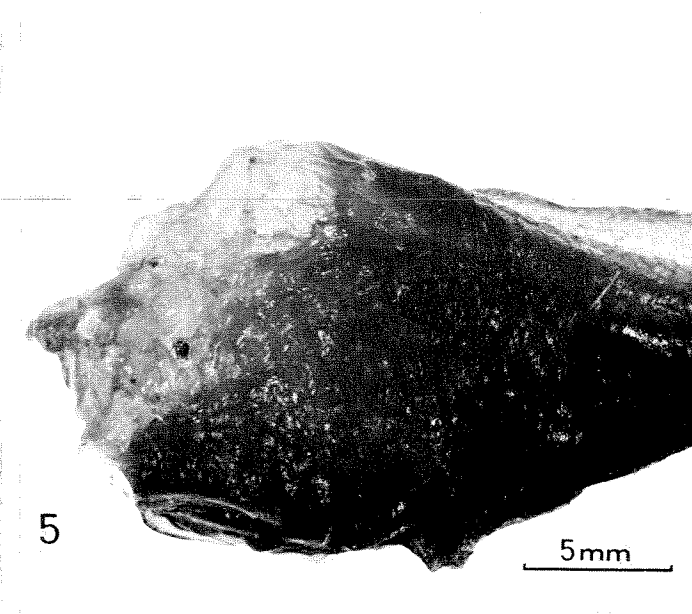
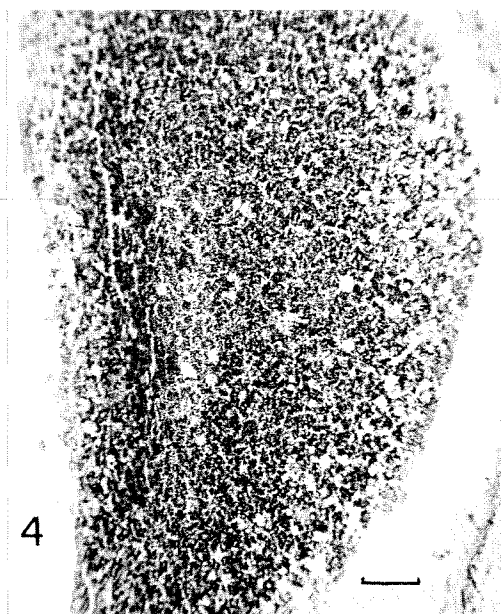
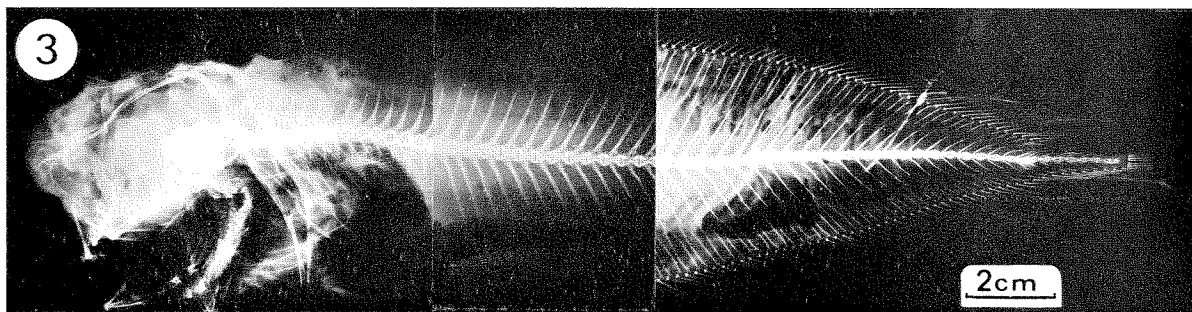
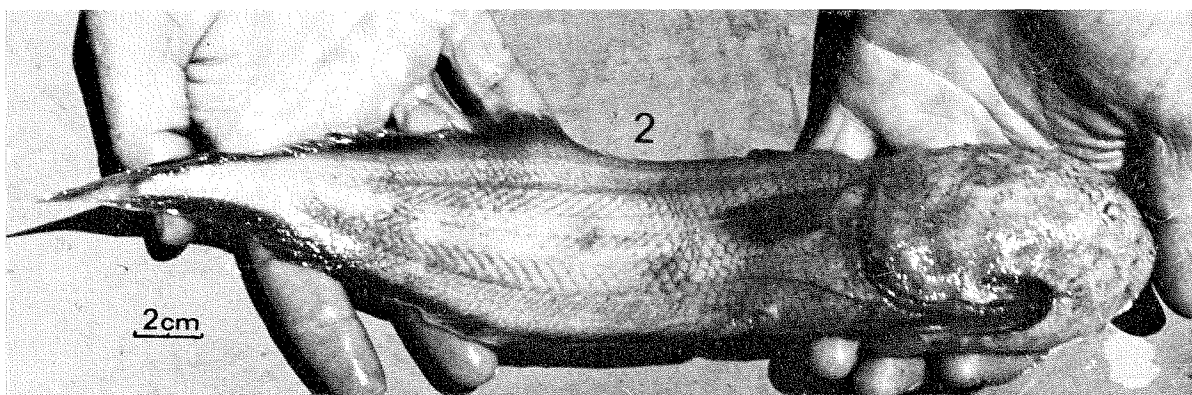
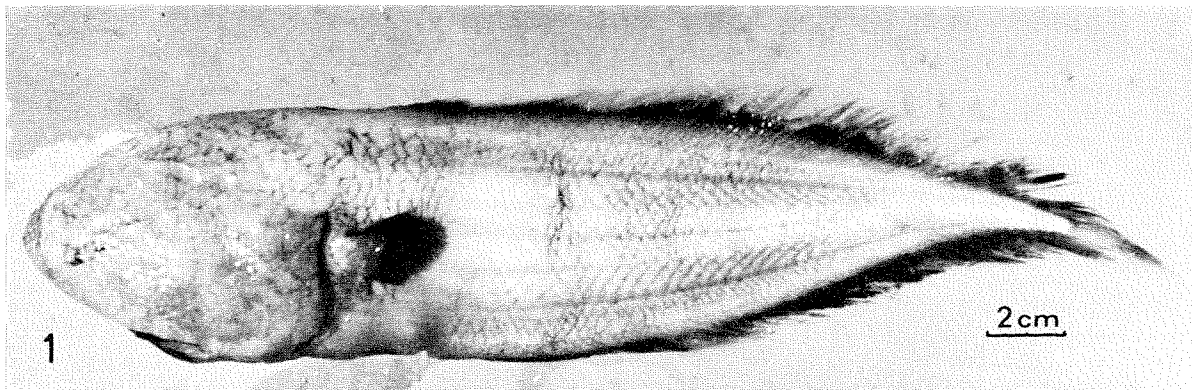


PLATE XIII

- Fig. 1. a and b: Otolith of *A. armatus*. "Oregon" St. 2567, std. l. 242 mm.
- Fig. 2. a and b: Otolith of *T. nasus*. "Galathea" St. 450, std. l. 211 mm.
- Fig. 3. Gill cavity of *A. armatus* showing the position of the thymus. "Galathea" St. 52, std. l. 220 mm. A = thymus. B = gill. C = opercular spine. D = base of pectoral fin. The scale indicates 2 mm.
- Fig. 4. Scales from *T. nasus*. a: "Galathea" St. 450, std. l. 211 mm. P 77446. b: From the paratype, std. l. 215 mm.

