

PLATE 6

Fecampia abyssicola n. sp.

- A. Cross section showing brain.
- B. Oblique section showing part of one gonad.
- C. Oblique section of posterior end.
- D. Section through part of the sexual duct system.
- E. Cross section through the uterus.
- F. Two larvae; one longitudinally and one cross-sectioned.

Abbreviations: db, dense bodies; e, egg (zygote); ec, egg capsules; g, gonad; gd, gonoduct; gp, gonopore; ooc, oocytes; ovd, ovovitelline duct; sp, sperm; u, uterus; yc, yolk cells.

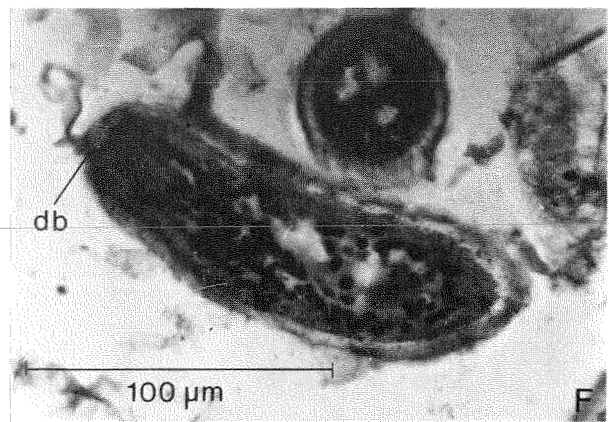
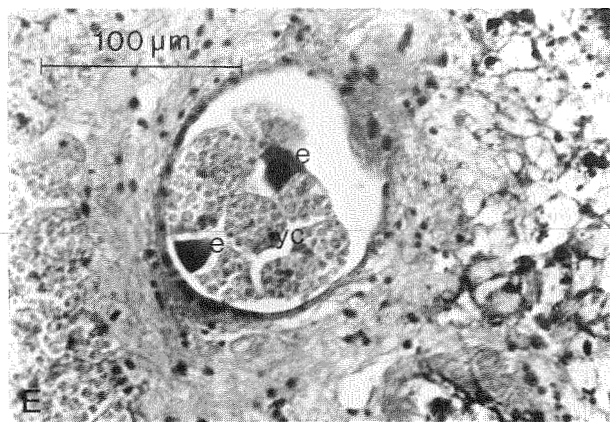
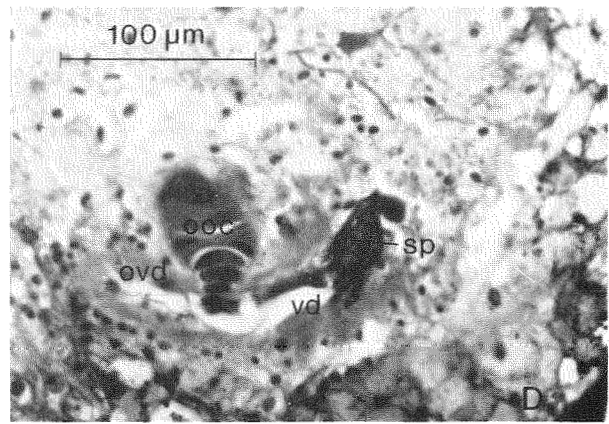
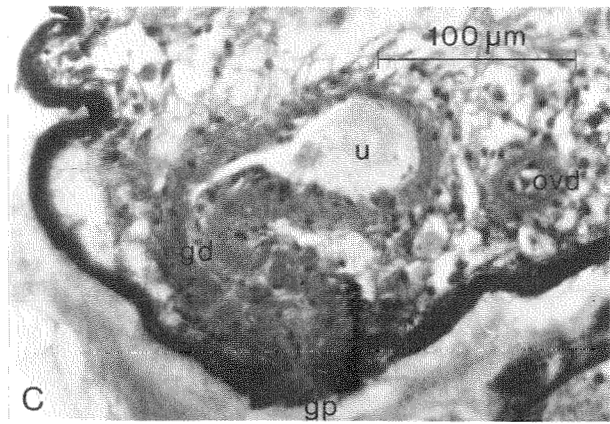
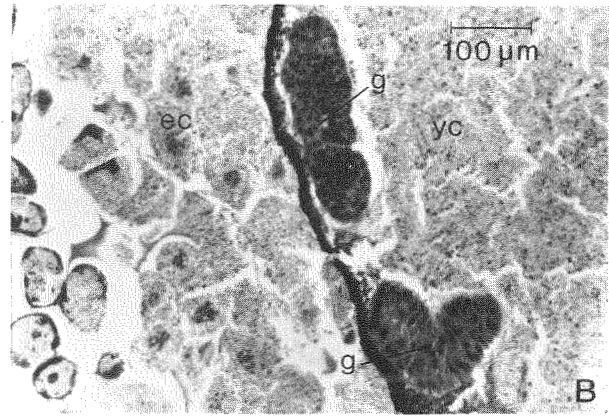
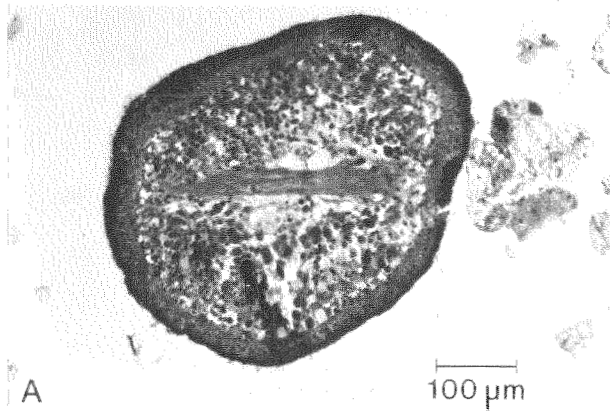
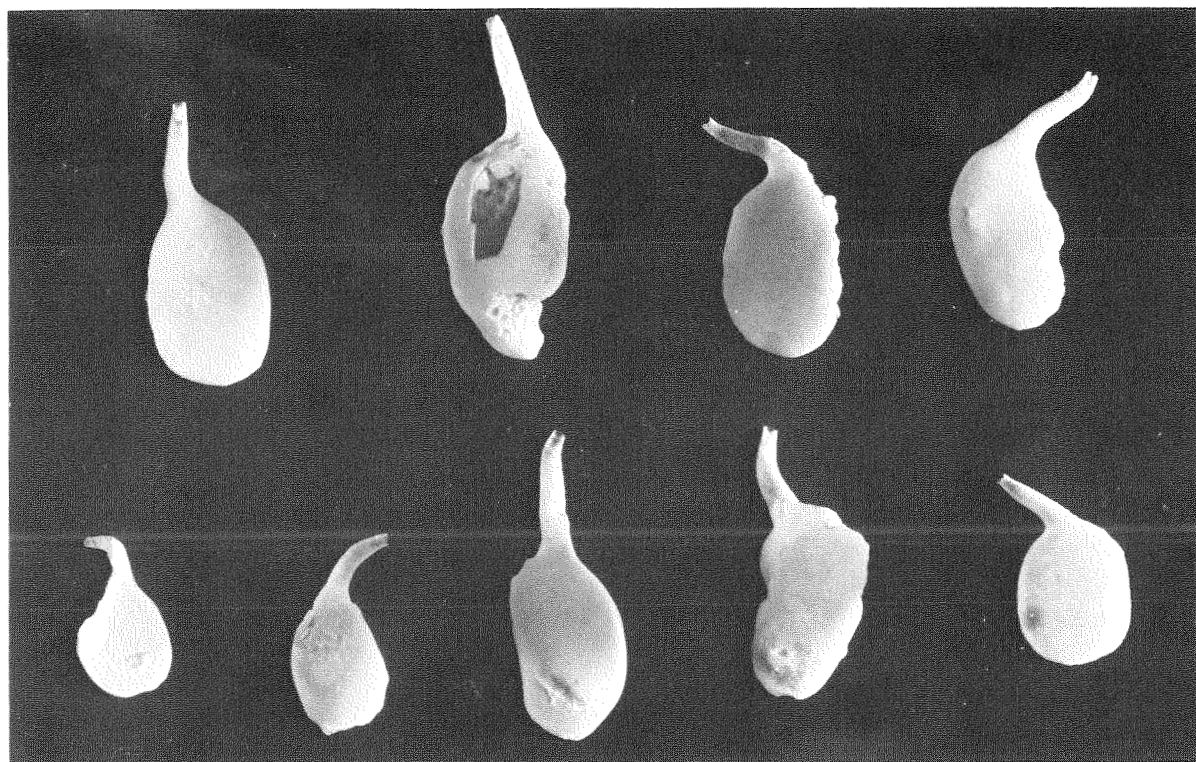


PLATE 7

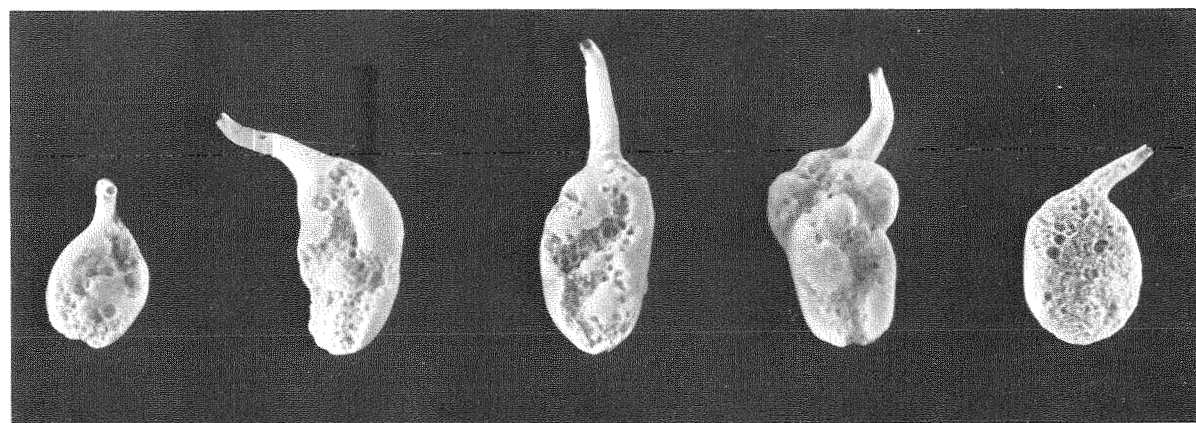
Fecampia abyssicola n. sp.

- A. Cocoons from "Discovery" St. 9131/9 seen from dorsal side.
 - B. Five of the cocoons shown in A viewed from the ventral side.
 - C. Cocoon from "Discovery" St. 9131/11 (type locality) with adhering *Globigerina* ooze shell material. Most of the nozzle is missing.
-

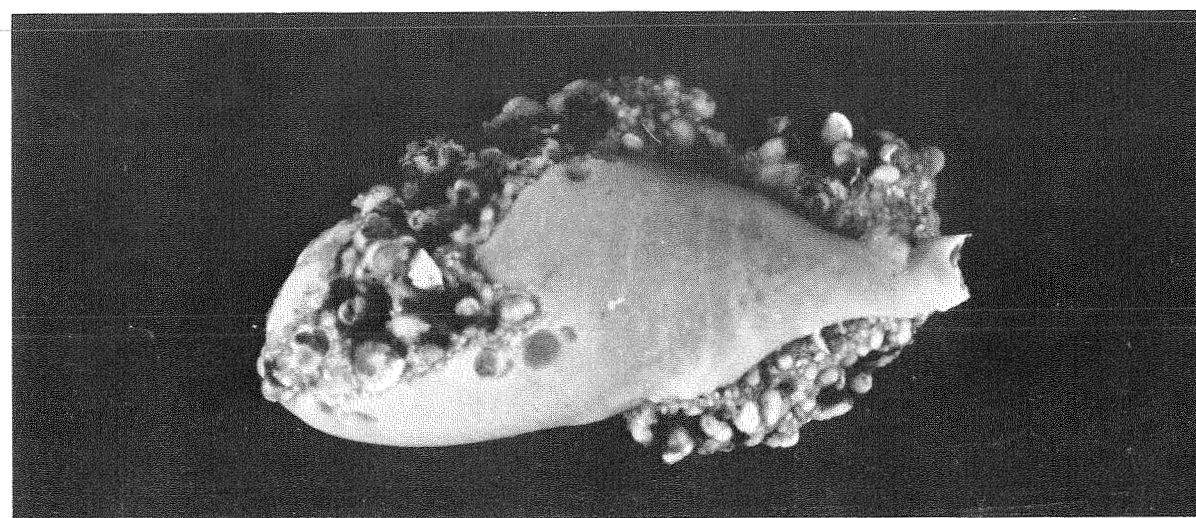


A

1 cm



B



1 mm

C

PLATE 8

- A. Cocoon type *G*. "Pillsbury" St. 1178.
 - B. Cross section of cocoon type *G*. Note thin ventral wall adhering to wooden substratum.
 - C. Cocoon type *H*. "Pillsbury" St. 976.
 - D. Cross section of cocoon type *H* posterior of dorsal wall bulges. g, gonad; rh, *Thalassia* rhizome causing irregularity of ventral wall; yc,
-

