

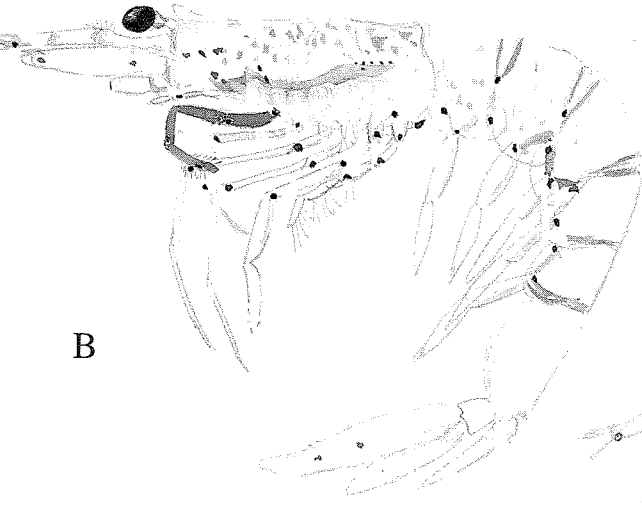
## PLATE 2

Colours in life and notes (translated from Danish) by K. Stephensen ("Dana I" Expedition, Caribbean Sea, 1921-22; originals at ZMUC).

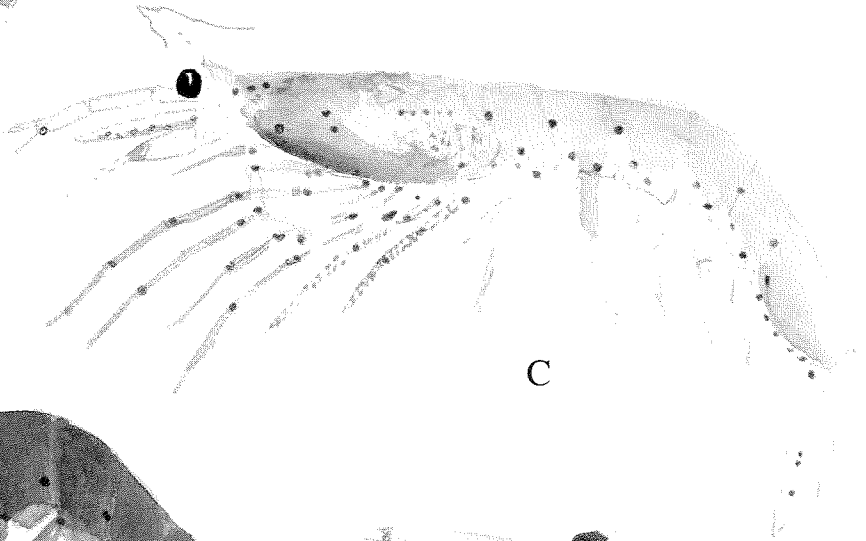
- A. *Sergia regalis* (as "*Sergestes C*"), male, "Dana" St. 1214, 600 mw; "tail fan may be completely red, petasma uniformly red".
- B. *Sergia talismani* (as "*Sergestes E*"), female, "Dana" St. 1173, 600 mw; "all the black spots are possibly light dots and are probably shown in the correct number; the "light dots" on squama and outer ramus of uropod are lacquer red on the outer (dorsal) side and black on the ventral side".
- C. *Sergia hansjacobi* (as "*Sergestes E*"), male ?ad., ca. 30 mm (Cp ca. 10 mm), "Dana" St. 1223, 500 mw; "numerous light organs ventrally, being black and easily recognizable against the light underside; larger specimens (e.g., [St.] 1225, 50 mw, ca. 40 mm) are of the same colour as the painting of "*Sergestes sp. E*" from [St.] 1173, 600 mw" (see B above).
- D. *Sergia splendens* (as "*Sergestes splendens*"), male, ca. 32 mm and petasma, "Dana" St. 1217, 3500 mw; "the dark reddish brown spots on the sides of abdominal somites may be light organs". Detail of anterior end in dorsal view, "Dana" St. 1150, 400 mw.
- E. *Sergia splendens* (as "*Sergestes splendens*"), about 1.5 times nat. size, and PI, medial side, "Dana" St. 1174, 600 mw.
- F. *Sergia inoa* (as "*Sergestes inous*"), male and petasma, Cp 34 mm, "Dana" St. 1206, 4000 mw; "completely without light organs".



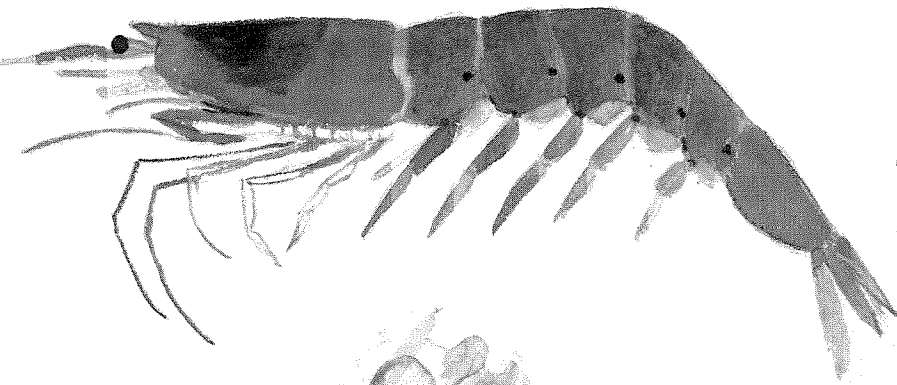
A



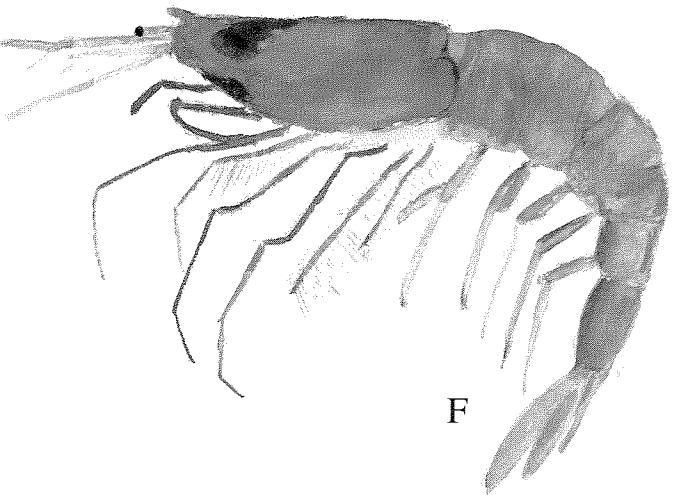
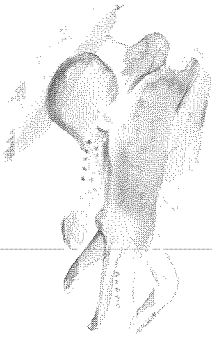
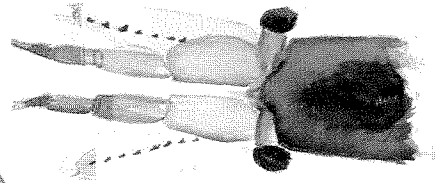
B



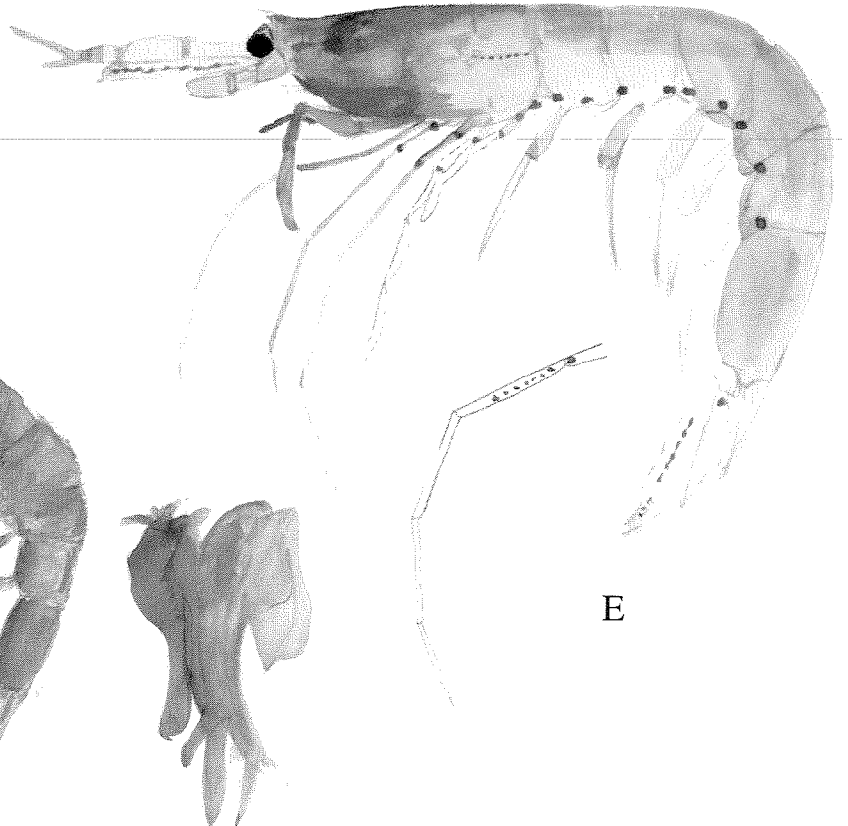
C



D



F



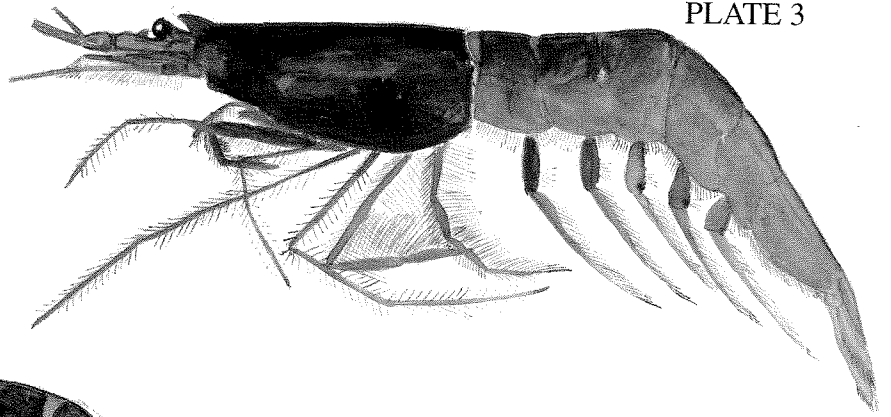
E

### PLATE 3

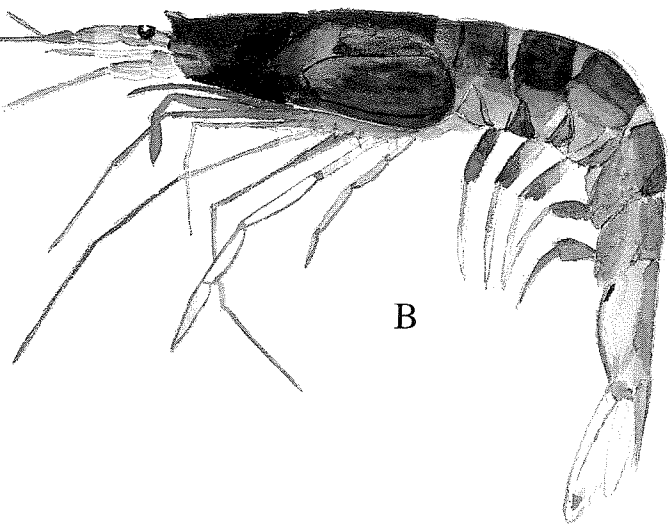
Colours in life and notes (translated from Danish) by K. Stephensen ("Dana I" Expedition, Caribbean Sea and Gulf of Panama, 1921-22; originals at ZMUC).

- A. *Sergia robusta* (as "*Sergestes robustus*"), St. 1156, 6000 mw, "a very large specimen".
- B. *Sergia robusta* (as "*Sergestes robustus*"), ca. 90 mm, "Dana" St. 1157, 2000 mw; "all setae on legs are left out".
- C. *Sergia phorca* (as "*Sergestes B*"), male, ca. 85 mm (Cp 26 mm), "Dana" St. 1206 (Gulf of Panama), 800 mw; "light organs present on squama, uropod, pereopods and all of the ventral side; petasma of pink male ([St.] 1205, 600 mw) colourless, finely red-dotted all over".
- D. *Sergia grandis* (as "*Sergestes D*"), male, ca. 68 mm (Cp 20 mm), and petasma, "Dana" St. 1217, 2000 mw; squama of female, ca. 76 mm (Cp 21 mm), "Dana" St. 1336, 600 mw; "a red spot on the otherwise colourless exopod of uropod (NB: fine specific character); other specimens were darker and still more heavily coloured; there are a few light organs between the mouth parts; the two light organs on abdominal segments 1 and 2 are lacking in the female".
- E. *Sergia grandis* (as "*Sergestes F*"), female, ca. 35 mm (Cp 11 mm), "Dana" St. 1223, 600 mw; "has a very long, slender abdomen; larger specimens are much darker; all light organs dark red, rather easily recognizable against the lighter ground colour; some, but not many light organs on legs and a diverging row on squama".

A



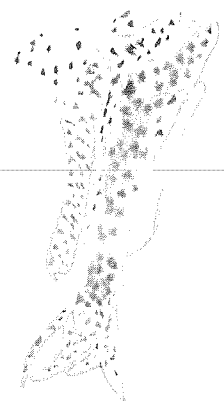
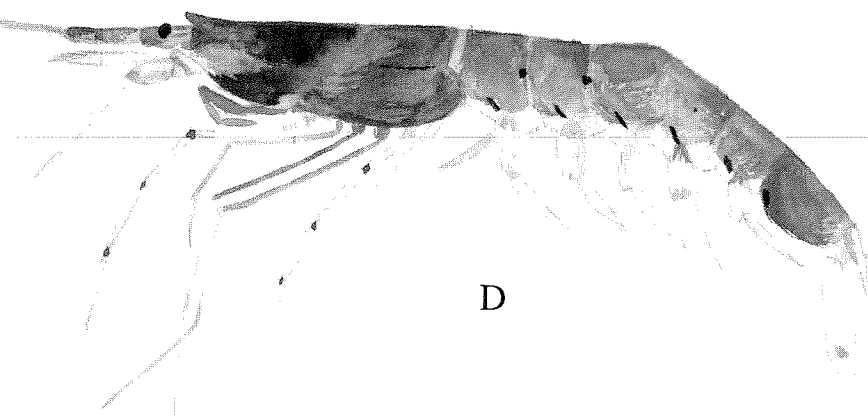
B



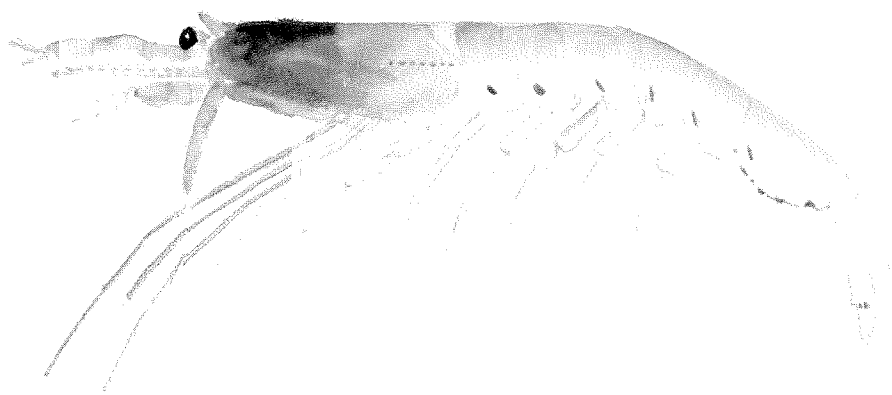
C



D



E



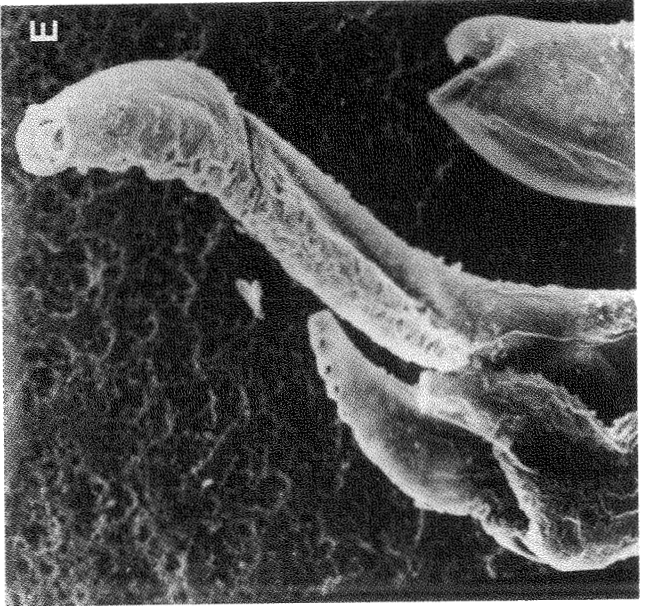
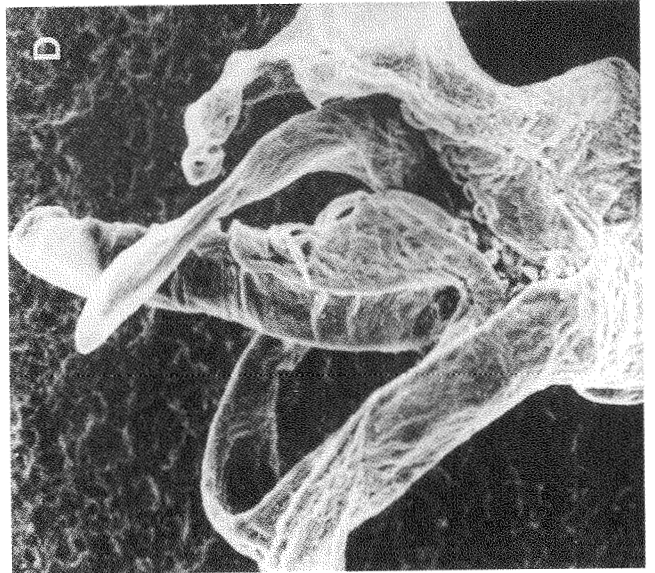
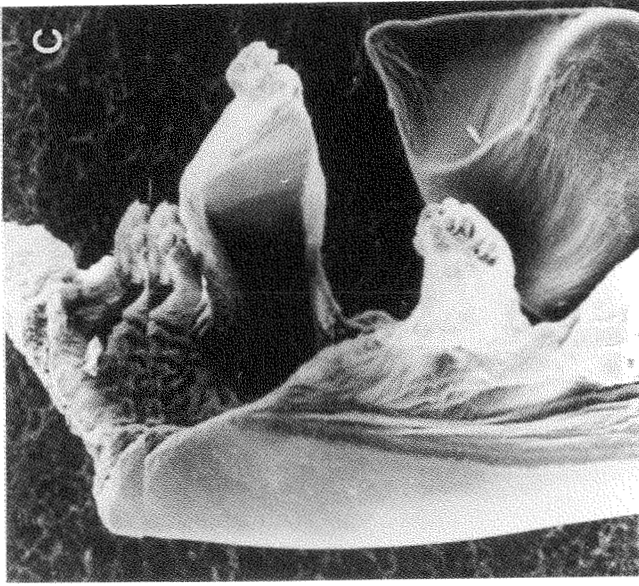
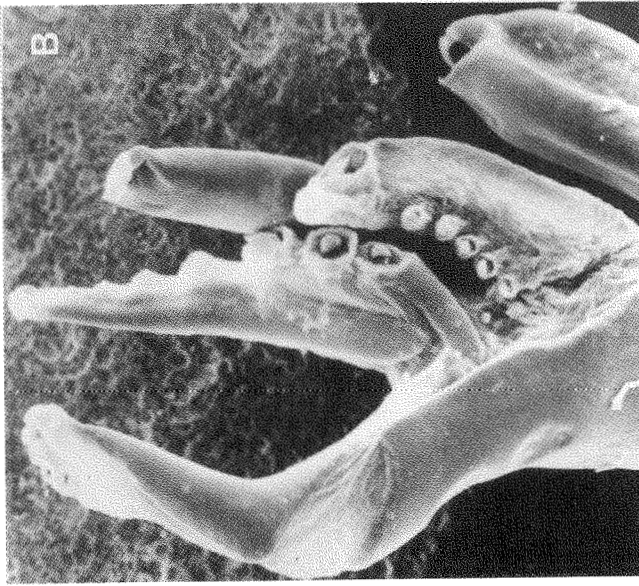
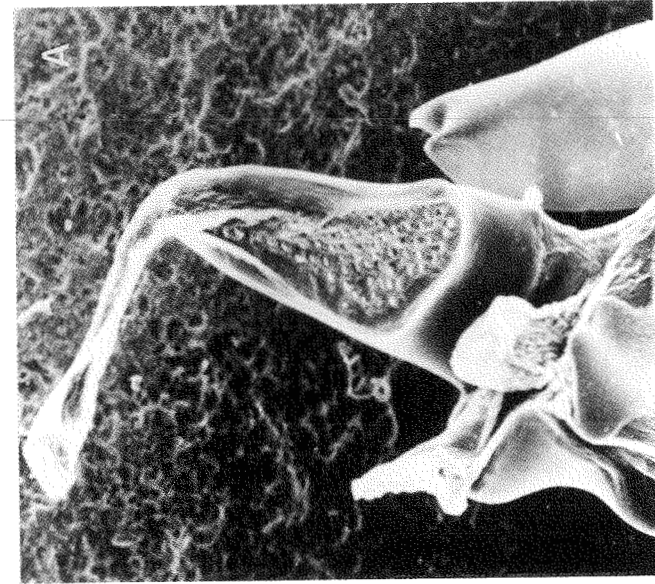


PLATE 4

Scanning electron micrographs of the petasma (oral view) of various species of *Sergia*.

- A. *Sergia japonica*.
- B. *Sergia splendens*.
- C. *Sergia inequalis*.
- D. *Sergia kensleyi* n. sp.
- E. *Sergia lucens*.

PLATE 5

Scanning electron micrographs of the petasma (oral view) of various species of *Sergia*.

- A. *Sergia challengeri*.
- B. *Sergia fulgens*.
- C. *Sergia talismani*.
- D. *Sergia stellata*.
- E. *Sergia oksanae* n. sp.
- F. *Sergia jeppeseni* n. sp.

