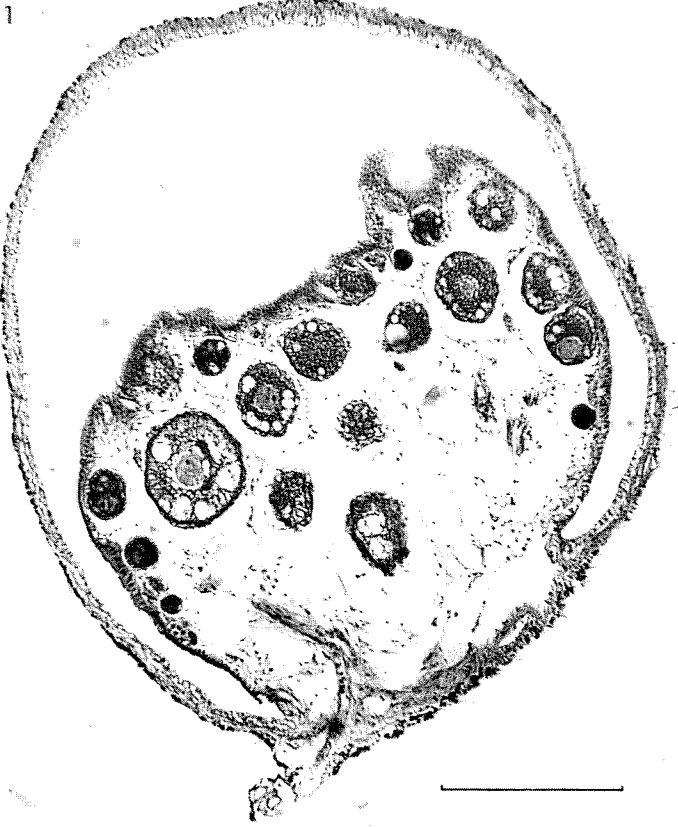


**PLATE I**

(The scale indicates 5 mm).

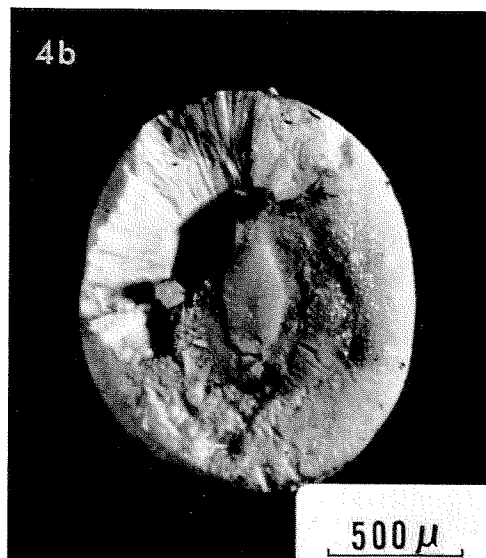
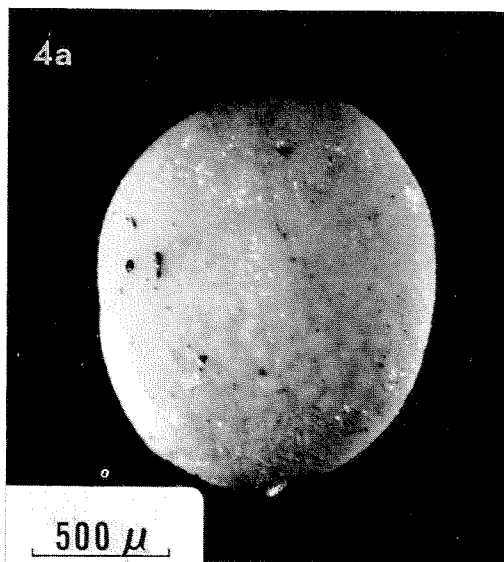
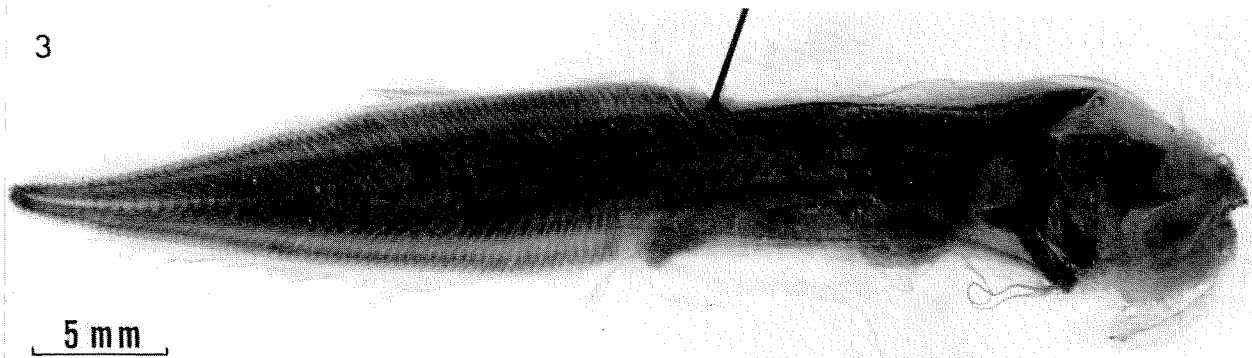
- Fig. 1. Ventral view of testes and excretory duct of *Barathronus bicolor*, SL 110 mm. UMML 7800.
- Fig. 2. Ventral view of ovaries, excretory duct and urinary bladder of *B. bicolor*, SL 97 mm. UMML 24227.
- Fig. 3. Caudal part of an alizarin stained *B. bicolor*, SL 110 mm. UMML 7800.
- Fig. 4. Ventro-lateral view of anterior part of an alizarin stained *B. bicolor*, SL 110 mm. UMML 7800.



## PLATE II

(The scale indicates 200  $\mu$ ).

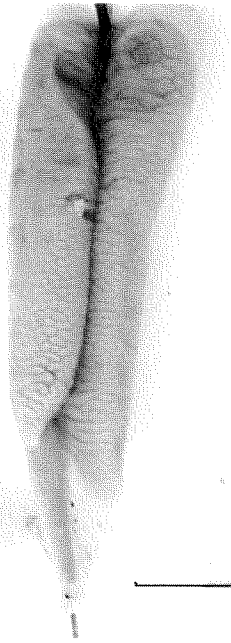
- Fig. 1. Transverse section of the left ovary of an unripe *Barathronus bicolor*, SL 72 mm. UMML 12345. Ser. No. 57. PAS.
- Fig. 2. Transverse section of the caudal part of the ovaries of *B. bicolor*, SL 74 mm. USNM 202109. Ser. No. 60. PAS. The black masses in the ovarian ducts are spermatozoa.
- Fig. 3. Transverse section of the caudal part of the ovaries of *B. bicolor*, SL 87 mm. Ser. No. 63. PAS. Large, but still unfertilized eggs.
- Fig. 4. Transverse section of the cranial part of the left ovary of *B. bicolor*, SL 104 mm. Ser. No. 41. AB. The two large eggs contain an embryo.



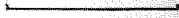
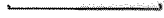
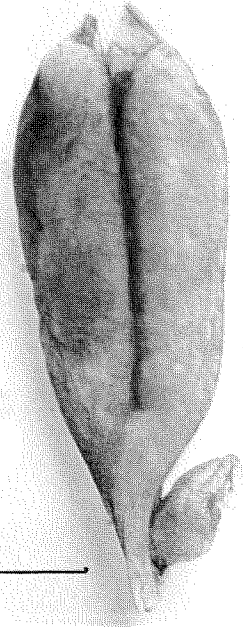
### PLATE III

- Fig. 1. Transverse section of the caudal part of an unripe testis of *B. bicolor*, SL 69 mm. UMML 12345. Ser. No. 58. PAS.
- Fig. 2. Transverse section of the caudal part of the left testis of *B. bicolor*, SL 92 mm. USNM 202116. Ser. No. 62. AB-PAS. Numerous spermatophores in the testicular duct.
- Fig. 3. Holotype of *Barathronus affinis* Brauer, 1906, SL 47 mm.
- Fig. 4. a and b: Otolith from holotype of *B. affinis*.
-

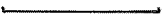
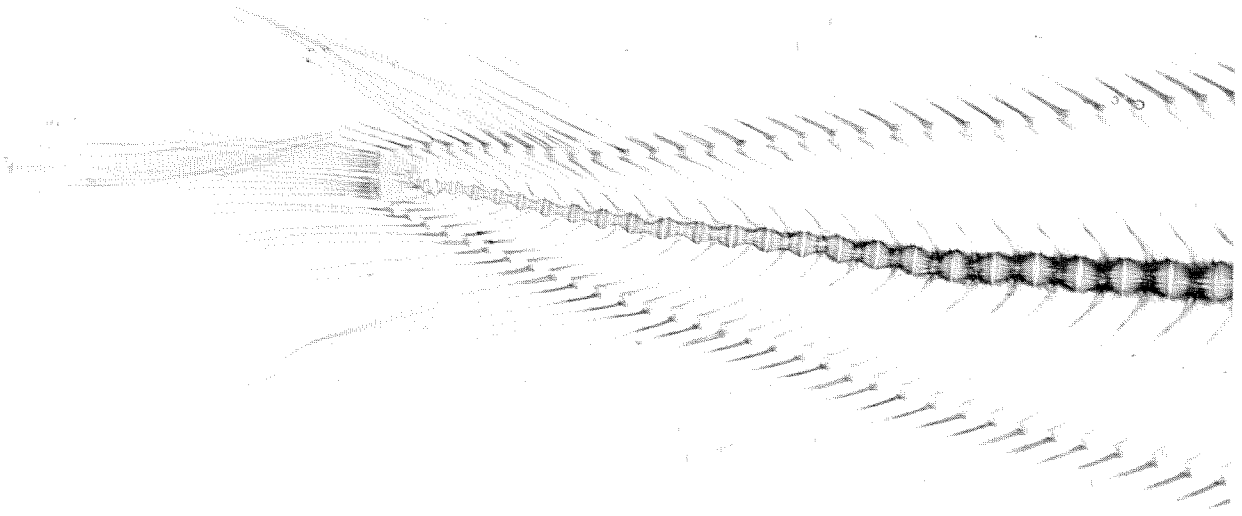
1



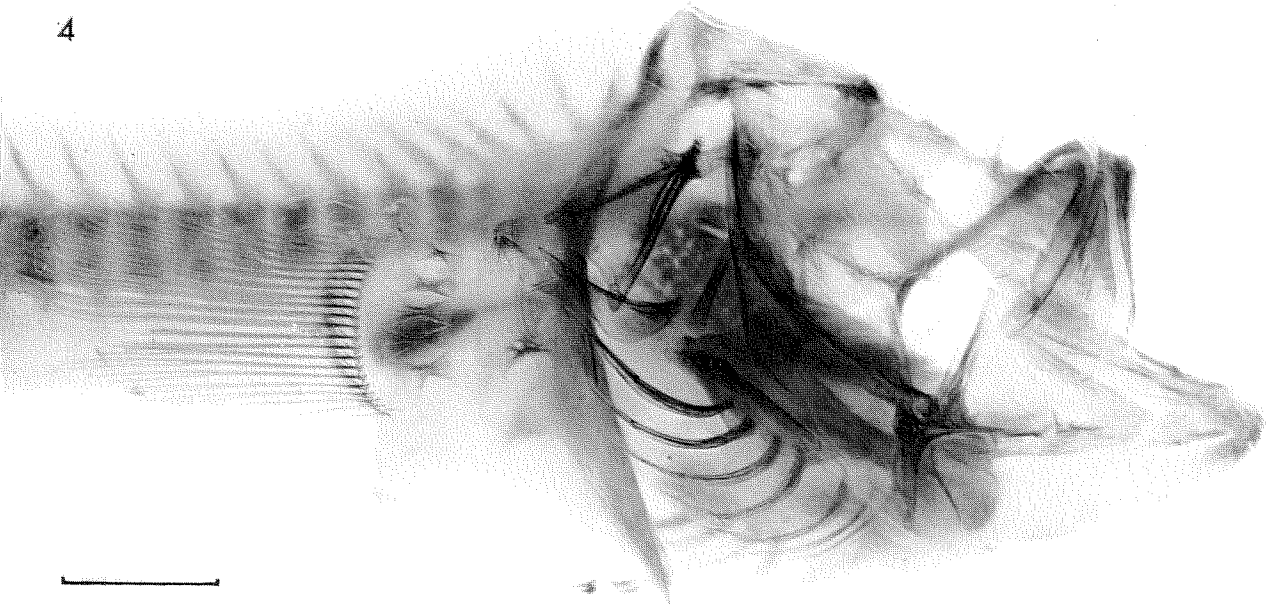
2



3



4



**PLATE IV**

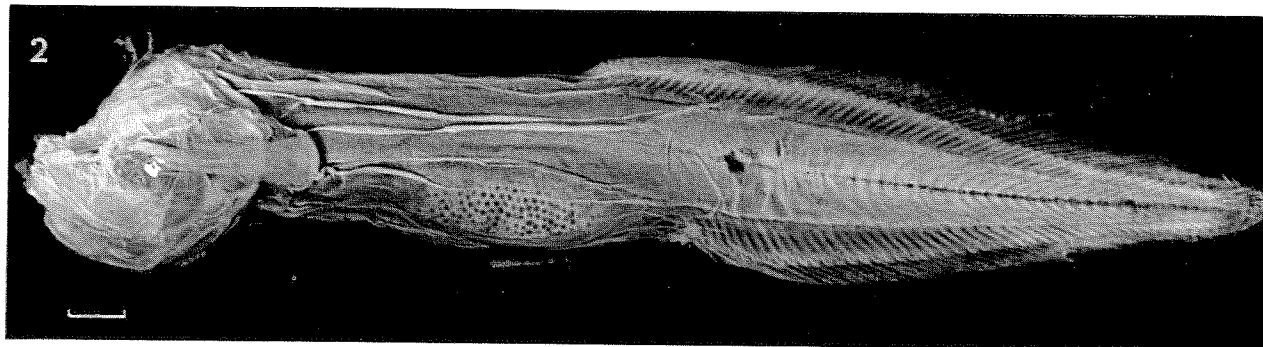
(The scale indicates 5 mm).

- Fig. 1. *Barathronus parfaiti* (Vaillant, 1888), SL 100 mm. MOM.  
Fig. 2. Holotype of *Barathronus diaphanus* Brauer, 1906, SL 117 mm.  
Fig. 3. Holotype of *Leucochlamys jonassoni* Nybelin, 1957, SL 38 mm.  
Fig. 4. The abdominal cavity of the holotype of *Sciadonus kullenbergi* Nybelin, 1957  
(= *S. pedicellaris* Garman, 1899).  
Fig. 5. Ovaries of the holotype of *Meteorina erythropros* n. gen. et sp.

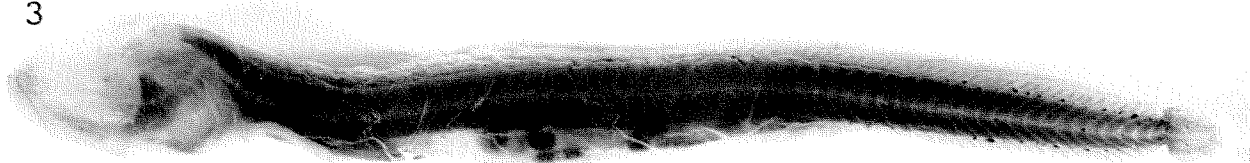
1



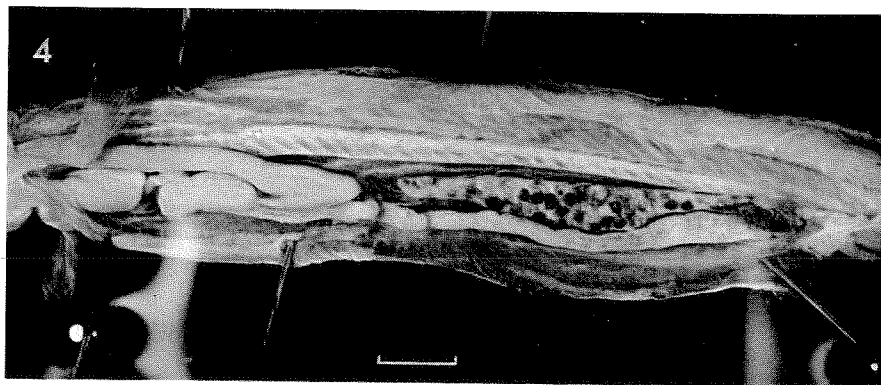
2



3



4



5

