

PLATE 1

*Thaumatoichthys axeli*, holotype, photographed onboard the *Galathea* just after the catch.

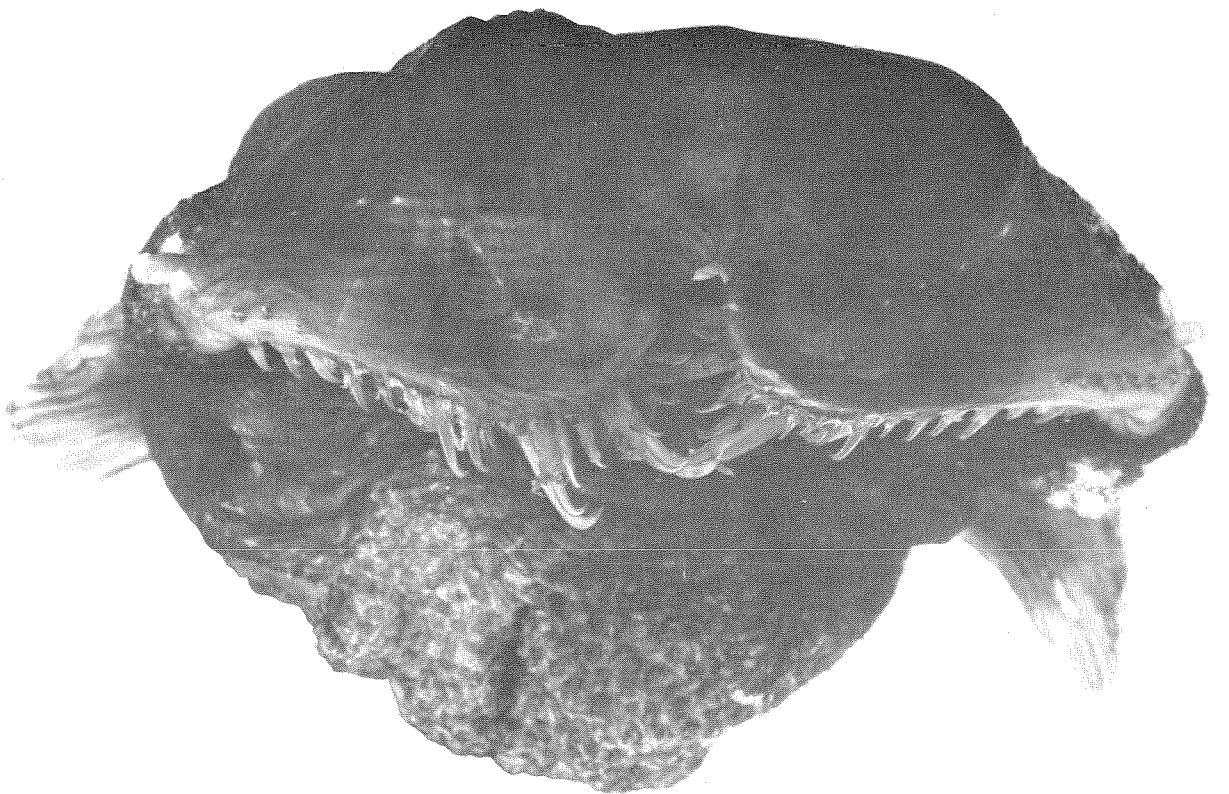
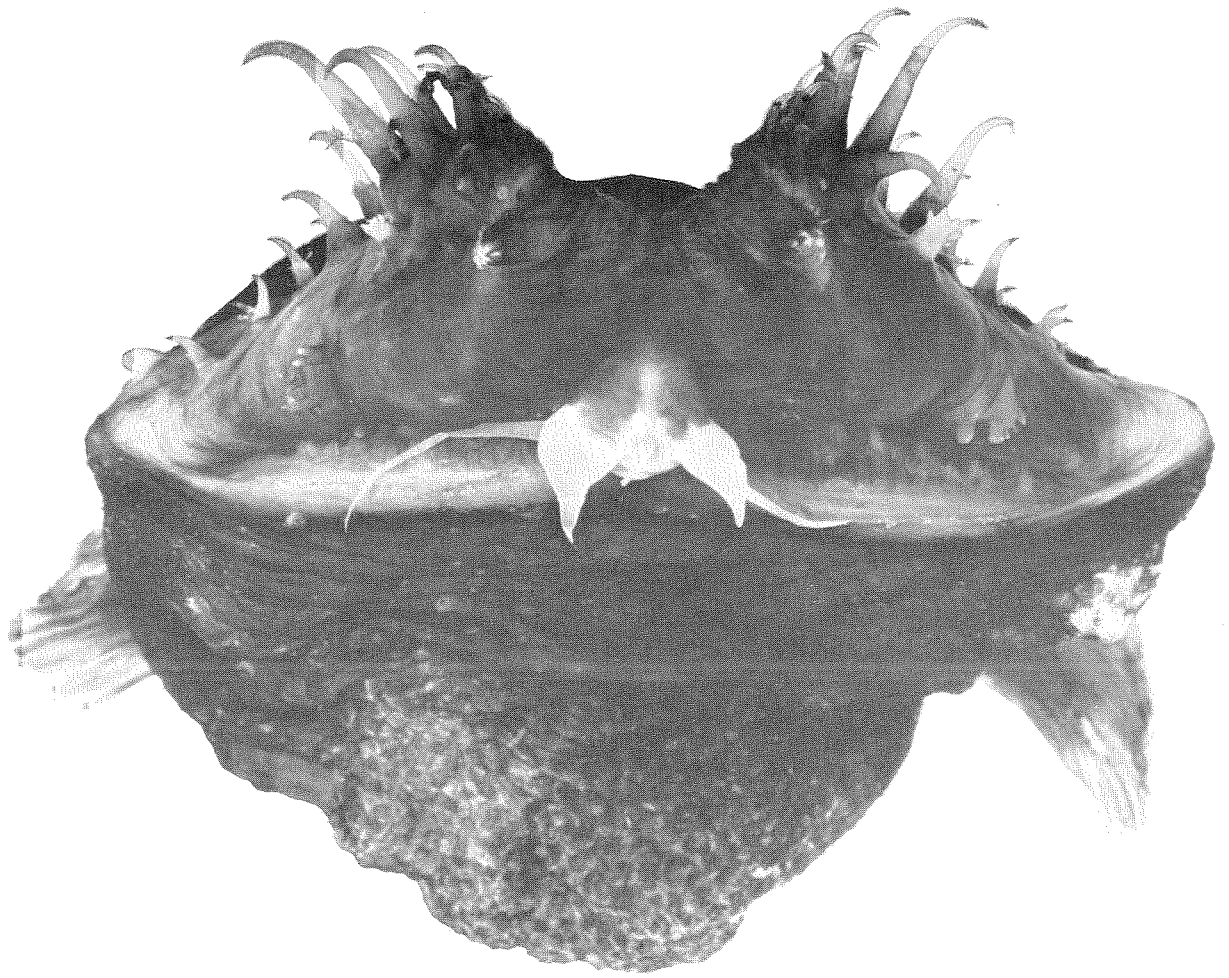


PLATE 2

*Thaumaticthys binghami*, 225 mm (UMML 30958).

Above: with raised upper jaws and exposed esca. Note also the large sensory papillae in the roof of the mouth.

Below: with closed mouth. Note the position of the eyes and olfactory organs and, below and in front of these, the large lateral line organs of the suborbital series.



PLATE 3

*Thaumatichthys binghami*, 225 mm (UMML 30958).

Above: in dorsal view with raised upper jaws.

Below: in ventral view with closed mouth.