

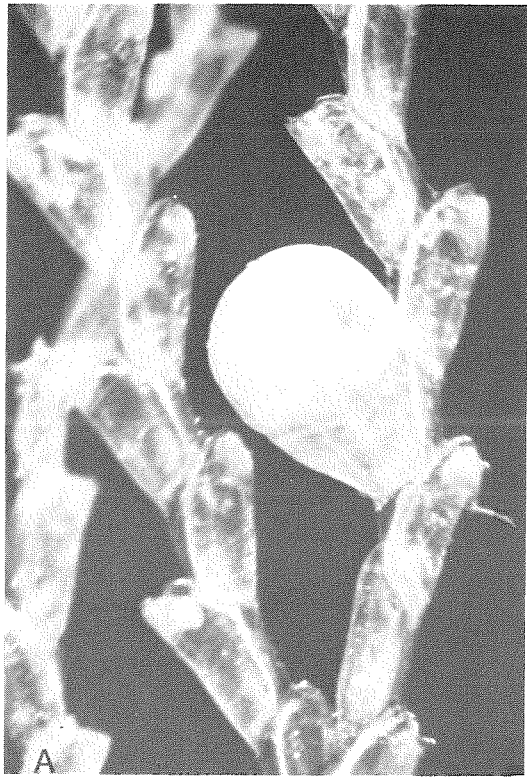
BIBLIOGRAPHY

- Bruun, A. F., 1957: General introduction to the reports and list of deep-sea stations. - Galathea Report **1**: 7-48.
- Busk, G., 1881: Notes on a peculiar form of Polyzoa closely allied to *Bugula* (*Kinetoskias* Kor. and Dan.). - Q. Jl. microsc. Sci. n. s. **21**: 1-14.
- 1884: Report on the Polyzoa. Part 1. The Cheilostomata. - Rep. Scient. Results. Voy. Challenger. Zool. **10** (30): 1-216.
- Calvet, L., 1907: Bryozoaires. - Expéd. Sci. "Travailleur" et "Talisman" 1880-1883 **8**: 355-495.
- Cook, P. L., 1964: Notes on the Flustrellidridae (Polyzoa, Ctenostomata). - Ann. Mag. nat. Hist. (13) **7**: 279-300.
- 1966: Some "sand fauna" Polyzoa (Bryozoa) from eastern Africa and the northern Indian Ocean. - Cah. Biol. mar. **7**: 207-223.
- 1979: Mode of life of small, rooted "sand fauna" colonies of Bryozoa. - In: G. P. Larwood and M. B. Abbott (eds.): *Advances in Bryozoology*. Systematics Association Special Volume No. 13. Academic Press, London.
- 1981: The potential of minute bryozoan colonies in analysis of deep-sea sediments. - Cah. Biol. mar. **22**: 89-106.
- & R. Lagaaij, 1976: Some Tertiary and Recent Conescharelliniform Bryozoa. - Bull. Br. Mus. Nat. Hist. (Zool.) **29**, 6: 319-376.
- Eggleston, D., 1972: Factors influencing the distribution of sublittoral ectoprocts off the south of the Isle of Man (Irish Sea). - J. nat. Hist. **6**: 247-260.
- Harmelin, J.-G., 1978: Bryozoaires du Banc de la Conception (nord des Canaries). Campagne Cineca I du "Jean Charcot". - Bull. Mus. natn. Hist. nat. Paris (3) no. 492, Zool. **341**: 1057-1076.
- Harmer, S. F., 1915: The Polyzoa of the Siboga Expedition. Part 1. Entoprocta, Ctenostomata and Cyclostomata. - Siboga Exped. **28A**: 1-180.
- 1923: On cellularine and other Polyzoa. - J. Linn. Soc. (Zool) **35**: 293-361.
- 1926: The Polyzoa of the Siboga Expedition. Part 2. Cheilostomata Anasca. - Siboga Exped. **28B**: 183-501.
- 1934: *Op. cit.* Part 3. Cheilostomata Ascophora. I. Family Reteporidae. - *Ibid.* **28C**: 503-640.
- 1957: *Op. cit.* Part 4. Cheilostomata Ascophora II. - *Ibid.* **28D**: 641-1147.
- Hastings, A. B., 1943: Polyzoa (Bryozoa), I. - Discovery Rep. **22**: 301-510.
- Haswell, W. A., 1881: On some Polyzoa from the Queensland Coast. - Proc. Linn. Soc. N. S. W. **5**: 33-44.
- Hayward, P. J., 1978: Bryozoa from the west European continental slope. - J. Zool. Lond. **184**: 207-224.
- 1979: Deep Water Bryozoa from the coasts of Spain and Portugal. - Cah. Biol. mar. **20**: 59-75.
- & P. L. Cook, 1979: The South African Museum's *Meiring Naude* cruises. Part 9, Bryozoa. - Ann. S. African Mus. **79**: 43-130.
- & J. S. Ryland, 1978: Bryozoa from the Bay of Biscay and the Western Approaches. - J. mar. biol. Ass. U. K. **58**: 143-159.
- Hedgpeth, J. W., 1957: Classification of marine environments. - In: J. W. Hedgpeth (ed.): *Treatise on Marine Ecology and Paleocology*, vol. 1. Mem. Geol. Soc. Amer. **67**: 17-28.
- Hondt, J.-L. d', 1970: Campagne d'essais du "Jean Charcot" (3-8 Décembre 1968). 5. Bryozoaires. - Bull. Mus. natn. Hist. nat. Paris (2) **42**: 232-256.
- 1973a: Bryozoaires de la campagne de la "Thalassa" (3-12 août 1967). - *Ibid.* (3) no. 120, Zool. **92**: 365-386.
- 1973b: Bryozoaires et Brachiopodes de la campagne Noratlante. - *Ibid.* no. 179, Zool. **118**: 1209-1223.
- 1975: Bryozoaires Cténostomes et Cheilostomes (Cribrimorphes et Escharellidae exceptés) provenant des dragages de la campagne océanographique Biacores du "Jean Charcot". - *Ibid.* no. 299, Zool. **209**: 553-600.
- 1976: Bryozoaires cténostomes bathyaux et abyssaux de l'Atlantique Nord. - Docum. Lab. Géol. Fac. Sci. Lyons, H. S. **3** (fasc. 2): 311-333.
- 1977: *Dendrobeatia* (*Himantozoum*) *cheethami*, n. sp. (Bryozoa Cheilostomata). Considérations sur les *Himantozoum*. - Cah. Biol. mar. **18**: 155-161.
- Jullien, J. & L. Calvet, 1903: Bryozoaires provenant des campagnes de l'Hirondelle (1886-1888). - Résult. Camp. Scient. Prince Albert I **23**: 1-188.
- Kluge, G. A., 1914: Die Bryozoen der deutschen Südpolar-Expedition, 1901-3. 1. - Deutsche Südpolar-Exped. **15**, 7: 601-678.
- 1962: Mshanki Severnykh Morei SSSR. - Opred. Faune SSSR **76**: 1-584.
- 1975: *Bryozoa of the northern seas of the USSR*. Amerind Publ. Co., New Delhi, pp. 1-711.
- Mawatari, S., 1974: Studies on Japanese Anascan Bryozoa 3. Division Malacostega (1). - Bull. Natn. Sci. Mus. Tokyo **17**, 1: 17-52.
- Rex, M. A., 1977: Zonation in deep-sea gastropods: the importance of biological interactions to rates of zonation. - In: B. F. Keegan, P. O'Ceidigh and P. J. S. Boaden (eds.): *Biology of Benthic Organisms*, Pergamon Press, Oxford, pp. 521-530.
- Schopf, T. J. M., 1969: Geographic and depth distribution of the Phylum Ectoprocta from 200 to 6000 meters. - Proc. Amer. Phil. Soc. **113**, 6: 464-474.
- Silén, L., 1942: Carnosa and Stolonifera (Bryozoa) collected by Prof. Dr. Sixten Bock's expedition to Japan and the Bonin Islands 1914. - Ark. Zool. **34A**, 8: 1-33.
- 1951: Bryozoa. - Rep. Swedish Deep Sea Exped. **2**, Zool. no. 5: 63-69.
- Waters, A. W., 1919: *Batopora* (Bryozoa) and its allies. - Ann. Mag. nat. Hist. (9) **3**: 79-94.
- Wyville Thomson, J. V., 1873: The Challenger Expedition. - Nature **7**, 177: 385-388.

PLATE 5

Figs A-B. *Euoplozoum cirratum* (Busk). A, portion of a colony, including an ovicellate zooid; B, detail of a branch to show avicularium.

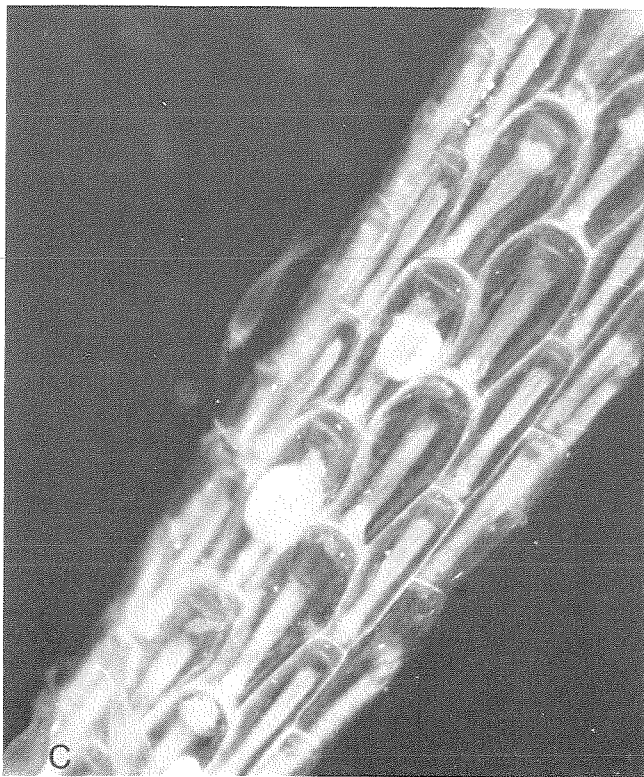
Fig. C. *Farciminellum hexagonum* (Busk), frontal surface of a branch with enlarged brooding zooids.



1mm



0.2 mm



2mm